

WEST VIRGINIA INTEROPERABLE COMMUNICATIONS



FIELD OPERATIONS GUIDE (WVFOG)

NOTICE

For Official Use Only - Public Safety
Sensitive

Version 2.1
November 2020



Introduction

The West Virginia Statewide Tactical Interoperable Communications Field Operations Guide (TIC-FOG) is a collection of technical reference material to aid Communications Unit personnel in establishing solutions to support communications during emergency incidents and planned events. The TIC-FOG includes information from the West Virginia Statewide Tactical Interoperable Communications Plan (TICP) as well as data from other West Virginia communications documents. The TIC-FOG is categorized into six Homeland Security and Radio Interoperability Committee (RIC) Regions.

The focus of this document is on regional, state, and federal interoperable and mutual aid systems, and assets. The TIC-FOG contains regional, state, and national interoperability channels.

We encourage you to program as many of these interoperability channels in your radios as possible, as permitted by the applicable regulations. Even if geographic restrictions on some channels preclude their use in your home area, you may have the opportunity to help in a distant location where the restrictions do not apply. Maximize your flexibility. Please send updates, corrections, or comments about the West Virginia Statewide TIC-FOG or requests for additional copies to rc.faulk@wv.gov.



Point of Contact (POC)

AGENCY:	WV Division of Homeland Security & Emergency Management
NAME:	RC Faulk
TITLE:	Assistant SWIC
ADDRESS:	1703 Coonskin Drive, Charleston, WV 25311
OFFICE PHONE:	304-558-5380
EMAIL:	rc.faulk@wv.gov

National Interoperability Field Operations Guide (NIFOG)

The National Interoperability Field Operations Guide is available at <https://www.dhs.gov/sites/default/files/publications/National%20Interoperability%20Field%20Operations%20Guide%20v1%206%201.pdf>



Table of Contents

INTRODUCTION	2
POINT OF CONTACT (POC)	3
INTEROPERABLE BEST PRACTICES	6
GENERAL RULES FOR USE	6
COMMUNICATIONS UNIT (COMU)	10
COMMUNICATIONS UNIT LEADER POSITION CHECKLIST	12
MAPS	15
COMMUNICATIONS CENTERS	17
STATE INTEROP RADIO SYSTEMS	20
SIRN SYSTEM.....	22
STATEWIDE AND LOCAL SHARED CHANNELS AND TALKGROUPS	23
INTEROPERABILITY/SHARED CHANNELS – VHF LOW BAND	23
STATEWIDE CHANNEL PLAN – VHF LOW BAND.....	23
INTEROPERABILITY/SHARED CHANNELS – VHF HIGH BAND.....	24
STATEWIDE CHANNEL PLAN – VHF HIGH BAND	30
INTEROPERABILITY/SHARED TALKGROUPS – UHF BAND	31
INTEROPERABILITY/SHARED CHANNELS – UHF BAND	45
STATEWIDE CHANNEL PLAN – UHF BAND.....	49
INTEROPERABILITY/SHARED TALKGROUPS 700 MHZ BAND	50
INTEROPERABILITY/SHARED CHANNELS – 700 MHZ BAND	50
INTEROPERABILITY/SHARED TALKGROUPS 800 MHZ BAND	51
INTEROPERABILITY/SHARED CHANNELS – 800 MHZ BAND	51
STATEWIDE CHANNEL PLAN – 800 MHZ BAND	51
NATIONWIDE INTEROPERABILITY CHANNELS	53



FEDERAL INCIDENT RESPONSE CHANNELS	- 60 -
FEDERAL INTEROPERABILITY CHANNELS FOR SEARCH AND RESCUE	- 63 -
COMMUNICATIONS RESOURCES	- 66 -
INTEROPERABILITY BASE STATIONS AND FIXED REPEATERS	- 66 -
TRANSPORTABLE GATEWAYS	- 68 -
TRANSPORTABLE INTEROPERABILITY REPEATERS	- 71 -
RADIO CACHES	- 73 -
MOBILE RADIO SYSTEMS	- 75 -
MOBILE COMMUNICATION UNITS	- 76 -
OTHER MOBILE EQUIPMENT	- 80 -
AMATEUR RADIO EMERGENCY COMMUNICATIONS	- 81 -
LOCAL AND REGIONAL ARES/RACES VOICE CHANNELS	- 81 -
LOCAL AND REGIONAL RACES SIMPLEX VOICE CHANNELS	- 81 -
STATEWIDE ARES/RACES VOICE CHANNELS	- 82 -
AUXILIARY COMMUNICATIONS POCs	- 82 -
AMATEUR RADIO ORGANIZATIONS	- 87 -
COMMUNICATIONS UNIT PERSONNEL	- 89 -
RECORD OF CHANGE	- 91 -
NOTES	- 93 -



Interoperable Best Practices

General Rules for Use

Prioritization and Shared Use of Interoperability Assets

When responding to events or incidents which cross over agency responsibilities, there may be competing demands and priorities for the use of interoperable communications assets.

An Incident Commander (IC), in cooperation with assisting agencies, will have the authority to request the use of interoperability assets. The Incident Commander, Logistic Section Chief (LSC), or Communication Unit Leader (COML), when designated, will direct further coordination and delegation of the interoperable communications assets assigned to the event or incident in question.

Agencies should judiciously activate interoperable assets needed to respond effectively to the event and/or incident and to minimize any negative impact on surrounding agencies or jurisdictions. Specifically, interoperable communications should be attempted keeping in mind the following order of deployment (subject to the involved agencies' discipline/responsibilities and the nature of the event/incident):

- Leverage face-to-face communications wherever appropriate. For example, when all command and general staff are co-located at the Incident Command Post (ICP) this provides the best direct communications and reduces the demand on interoperability resources.
- Employ local communications assets until those assets become taxed or inadequate based on the nature and/or scope of the incident.



- If response agencies operate on disparate systems, use shared or mutual aid channels to establish interoperable communications.
- When interoperable communications cannot otherwise be established between response agencies, use swap or cache radios to establish communications for responders.
- Use other non-public safety common carrier communications mediums. Keep in mind that push-to-talk common carrier systems can quickly become overloaded and non-functional during disasters or large-scale emergencies.
- If no other method of interoperability can be established, relay communications through staff members (runners).

When the same resources are requested simultaneously for two or more incidents, the resources should be assigned based on the following priority levels (in decreasing priority; i.e. lower on the list indicates a greater priority):

- Disasters, large scale incidents, or extreme emergencies requiring mutual aid or interagency communications.
- Incidents where imminent danger exists to life or property.
- Incidents requiring response by multiple agencies.
- Pre-planned events requiring mutual aid or interagency communications.
- Incidents involving a single agency where supplemental communications are needed for agency use.
- Drills, tests and exercises.

In the event of multiple simultaneous incidents within the same priority level, the resources should be allocated with the following principles in mind:



- Incidents with the greatest level of exigency (e.g., greater threat to life or property, more immediate need, etc.) have priority over less exigent incidents.
- Agencies with single/limited interoperability options have priority use of those options over agencies with multiple interoperability options.
- When at all possible, agencies already using an interoperability asset during an incident or event should not be redirected to another resource.

Requests for Communications Resources

The request guidelines outline the general information required to deploy or activate interoperable communications assets and resources:

- Requesting agency
- On-scene agencies requiring interoperability
- Incident/event type (e.g., wild land fire, weather related event, etc.)
- Communications capability needed
- Expected duration of event
- Location required/access information
- Incident POC and contact information
- User/requestor and/or servicing dispatch contact phone number
- Copy of the ICS-205 Communications Plan, if available
- Initial calling channel to use upon approach and arrival
- Additional support services requested (e.g., COMU personnel, generator, etc.)



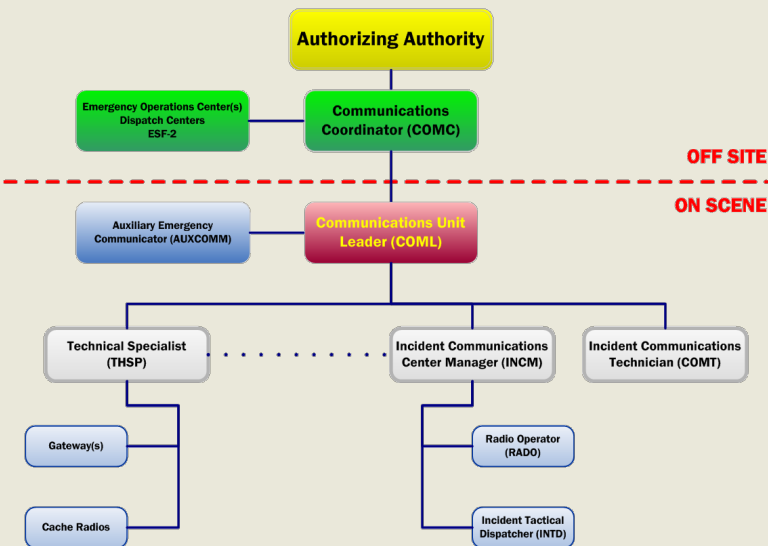
Requests for Communications Support

An agency needing support from a communications asset will contact the local dispatch center.

- The local dispatch center will gather base information on the request and contact the local county emergency manager.
- If the request is for a State agency, the agency may contact the State EOC directly for asset requests.
- The county emergency manager will follow established procedures for asset requests via the E Team reporting software to interface with the State EOC.
- The State EOC will field the request and forward to the SWIC for approval and asset procurement.
- The requesting agency will be notified of the status of the request. If the request is approved, continue below.
- If the asset is approved and deployed, it will be sent to the IC for staging or deployment.
- The asset will follow established demobilization procedures.



Communications Unit (COMU)



Communications Unit Staff Roles

Communications Coordinator (COMC) – The Communications Coordinator works with the COML to coordinate assignment and use of communications channels and talkgroups. Locally, 911 Dispatch Center Personnel may act as a COMC.

Communications Unit Leader (COML) – The COML will manage the technical and operational aspects of the communications function



during an incident or event, as well as develop National Incident Management System (NIMS)/Incident Command System (ICS) Form 205, Incident Radio Communications Plan and supervise the communication unit.

Information Technology Unit Leader (ITSL) - Is responsible for the provision and support of computer hardware, system and application software as well as data communications and IT services infrastructure during an incident or event.

Incident Communications Technician (COMT) – COMTs are designated for incidents and events. They are also recognized as the cache managers for portable radios. They deploy advanced equipment and keep it operational throughout the incident/event

Technical Specialist (THSP) – Technical specialists assist the COMT with support for computers, networks, and telephone services in the CMUs. The COML and COMT will coordinate support from the THSP for incidents and events.

Incident Communications Center Manager (INCM) – The 911 Dispatch Center Supervisor is designated as the INCM and supervises the operational aspects of the Incident Communications Center (ICC), (Mobile Unit and/or Fixed Facility). During an incident, the ICC is designed to absorb incident traffic in order to separate that traffic from the day-to-day activities of the Dispatch Center. The ICC is typically located at the Incident Command Post (ICP) in a fixed site, tent, trailer or mobile communications vehicle.

Radio Operator (RADO) - The 911 Dispatch Center Communications Response Team (CRT) members are designated as RADOs for an incident and staff radios at the ICC and are responsible for documenting incoming radio and telephone messages. Incident Dispatchers or Tactical Dispatchers are used as RADOs.



COMMUNICATIONS UNIT LEADER POSITION CHECKLIST

The following checklist should be considered as the minimum task requirements for the COML position. Note that some of the tasks are one-time actions while others are on-going or repeated for the duration of the incident.

- Obtain briefing from the Logistics Section Chief or Service Branch Director:
- Organize and staff the unit as appropriate.
- Assign INCM, Message Center Manager and staff as needed.
- Assess communications systems, channels and talkgroups in use; advise on communications capabilities and limitations.
- Develop and implement effective communications procedures (flow) internal and external to the incident and Incident Command Post.
- Assess the Incident Command Post's phone load and request additional lines, as needed.
- Prepare and implement an Incident Communications Plan (ICS Form 205):
 - Obtain a current organizational chart.
 - Determine the most hazardous tactical activity; ensure adequate communications.
 - Administer communications assignments to all other Operations elements, including volunteer, contract, or mutual aid.
 - Determine Command communications needs.
 - Determine support communications needs.
- Establish and post specific procedures for use of the Incident Command Post communications equipment.



- Include cellular phones and other wireless devices in the Incident Communications Plan (ICS Form 205A), if appropriate:
 - Determine specific organizational elements to be assigned to telephones.
 - Identify all facilities/locations with which communications must be established (e.g., shelters, press area, liaison area, agency facilities, other governmental entities' Emergency Operations Centers).
 - Identify and document phone numbers for each of these locations.
 - Determine which device and phone number assignments
 - Assign specific telephone numbers for incoming calls and report these numbers to appropriate staff and other agencies.
 - Do not publicize OUTGOING call lines.
- Activate volunteer radio organizations, serve as their contact point, and supervise their integration into the communications system.
- Ensure radio and telephone logs are available and being used.
- Determine the need and availability of additional nets and systems:
 - Order through the Supply Unit after approval by the Section Chief.
 - Federal systems: Additional radios and other communications devices may be available through the Federal Emergency Management Agency or the U.S. Department of Agriculture's Forest Service.
- Document malfunctioning communications equipment and facilitate repairs.
- Establish and maintain a communications equipment accountability system.



- Provide technical information, as required, on:
 - Adequacy of communications system currently in use.
 - Geographic limitation on communications equipment.
 - Amount and types of equipment available and equipment capabilities.
 - Anticipated problems in the use of communications equipment.
- Estimate the unit's needs for expected operations; order relief personnel as needed.
- Provide briefing to relief personnel on current activities and unusual situations.
- Document all activity in a Unit Log (ICS Form 214).



Maps

West Virginia Regions



Figure 1: Radio Interoperability Committees (RIC) Regions



West Virginia

Medical Command System

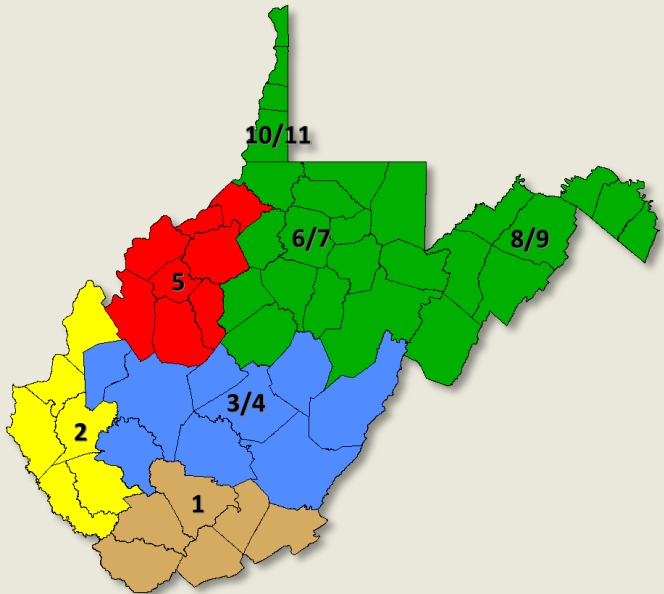


Figure 2: West Virginia Medical Command Regions



Communications Centers

WEST VIRGINIA COMMUNICATIONS CENTERS		
CENTER	AGENCY	24/7 PHONE
State Dispatch Centers		
Watch Center	WV DHSEM	304-558-5380
WV Division of Forestry	WV Division of Forestry	304-558-2788
WV Division of Highways	Dept of Transportation	304-558-9492
WV Public Service Commission	Public Service Commission	304-340-0442
WV State Police	State Police	304-746-2154
Medical Command		
Region 1 Regional Command	Raleigh General Hospital	304-256-4374 800-367-2690
Region 2 Huntington Medical Command	Cabell Huntington Hospital	304-526-2314 800-654-5767
Region 3/4 Charleston MedBase	CAMC General Hospital	304-388-6002 800-346-4206
Region 5 MCC, WESTCOM	Sutton Medical Coordination Center	304-765-4500 866-893-7266
Region 6/7, 8/9, 19/11 WVUH Medical Command	West Virginia University Hospital	304-598-4100 866-244-5027
Region I		
Calhoun Co 911	Calhoun Co 911/OEM	304-354-9272
Central Communications (Doddridge & Ritchie Counties)	Central Communications	304-659-3770
Clay Co E911	Clay Co Comm Users Board	304-587-2019
Jackson Co 911 Comm	Jackson Co Commission	304-372-2000
Metro 911	Kanawha Co OEM	304-357-0191
Pleasants Co 911	Pleasants Co Commission	304-684-0035
Putnam Co	Putnam Co Commission	304-586-0246
Roane County 911	Roane County OES	304-927-0911
Wood Co Central Telecomm	Wood Co	304-485-8501



WEST VIRGINIA COMMUNICATIONS CENTERS

CENTER	AGENCY	24/7 PHONE
Parkersburg Police Dispatch	Parkersburg Police Dept	304-424-8444
Region II		
Brooke County Enhanced 911	Brooke Co Commission	304-737-3660
Hancock County 911	Hancock Co Commission	304-564-4100
Harrison-Taylor 911	Harrison Co Commission	304-626-4900
Marion County 911	Marion Co DHSEM	304-367-0915
Marshall County 911	Ohio & Marshal Counties	304-845-1920
Benwood Police Department	Benwood, City of	304-232-2121
Glen Dale Communications	Glen Dale, City of	304-845-5511
MECCA E-911	Monongalia Co Commission	304-599-6382
Ohio-Wheeling 911	Ohio & Wheeling Co Commissions	304-234-3711
Preston County 911	Preston Co OEM	304-329-0579
Wetzel County 911	Wetzel County Commission	304-455-6730
Region III		
Berkeley Co Central Dispatch	Berkeley Co Council	304-263-1330
Grant County 911 Center	Grant Co Commission	304-257-5451
Hampshire County 911 Center	Hampshire Co Commission	304-822-6000
Hardy County 911	Hardy Co Commission	304-530-0291
Jefferson Co Emgy Comms	Jefferson Co Commission	304-725-8484
Mineral Co 911 Center	Mineral Co Commission	304-788-4106
Morgan County 911 Center	Morgan Co Commission	304-258-0305
Region IV		
Barbour Co 911	Barbour Co Commission	304-457-5167
Braxton Co 911 Comm Center	Braxton Co OES	304-765-7366
Lewis-Gilmer E-911	Lewis and Gilmer Counties	304-269-8241
Pendleton Co 911	Pendleton Co Commission	304-358-3271
Pocahontas County 911	Pocahontas Co Commission	304-799-6537
Randolph Co E-911 Center	Randolph Co Commission	304-637-3561
Tucker Co E-911 Center	Tucker Co Commission	304-478-2187



WEST VIRGINIA COMMUNICATIONS CENTERS

CENTER	AGENCY	24/7 PHONE
Upshur Communications	Upshur Co Commission	304-472-9550
Webster Co 911 Center	Webster Co Commission	304-847-7171
Region V		
Fayette Co E911	Fayette Co OEM	304-574-3590
Greenbrier Co Emergency Communications Center	Greenbrier Co Commission	304-647-7911
McDowell County Communications 911	McDowell Co Communications Authority	304-436-4106
Mercer County 911	Mercer Co Commission	304-425-8911
Monroe County 911 Center	Monroe Co Commission	304-722-3912
Nicholas County 911	Nicholas Co Commission	304-872-4911
Raleigh Co Emergency Operations Center	Raleigh Co Emergency Services Authority	304-255-0911
Summers County E-911	Summers Co Commission	304-466-5613
Wyoming County 911	Wyoming Co Commission	304-732-6953
Region VI		
Boone County E-911	Boone Co Commission	304-369-9913
Cabell County 911 (CCERC911)	Cabell Co Commission	304-526-8555
Lincoln County Emergency Communications Center	Lincoln Co OES	304-824-3443
Logan County 911	Logan Co 911	304-752-7662
Mason Co NextGen E-911	Mason Co Commission	304-675-9911
Mingo County 911 Center	Mingo Co Commission	304-235-8551
Wayne County 911	Wayne Co Commission	304-272-6333



State Interop Radio Systems

Radio System Name	Type	Mode	Band	Operating Area
State Shared Systems				
WV SIRN	<input type="checkbox"/> Conv. <input checked="" type="checkbox"/> Trunked	<input type="checkbox"/> Analog <input checked="" type="checkbox"/> Digital	UHF	Statewide
WV DEP	<input checked="" type="checkbox"/> Conv. <input type="checkbox"/> Trunked	<input checked="" type="checkbox"/> Analog <input type="checkbox"/> Digital	VHF/UHF	Statewide
Region I				
Calhoun County VHF	<input checked="" type="checkbox"/> Conv. <input type="checkbox"/> Trunked	<input checked="" type="checkbox"/> Analog <input type="checkbox"/> Digital	VHF	Calhoun County
Jackson County VHF Legacy System	<input checked="" type="checkbox"/> Conv. <input type="checkbox"/> Trunked	<input checked="" type="checkbox"/> Analog <input type="checkbox"/> Digital	VHF	Jackson County
Kanawha County OEM	<input checked="" type="checkbox"/> Conv. <input type="checkbox"/> Trunked	<input checked="" type="checkbox"/> Analog <input type="checkbox"/> Digital	VHF	Kanawha County
Pleasants County OEM	<input checked="" type="checkbox"/> Conv. <input type="checkbox"/> Trunked	<input checked="" type="checkbox"/> Analog <input type="checkbox"/> Digital	VHF	Pleasants County
Putnam County VHF	<input checked="" type="checkbox"/> Conv. <input type="checkbox"/> Trunked	<input checked="" type="checkbox"/> Analog <input type="checkbox"/> Digital	VHF	Putnam County
Wood County VHF	<input checked="" type="checkbox"/> Conv. <input type="checkbox"/> Trunked	<input checked="" type="checkbox"/> Analog <input type="checkbox"/> Digital	VHF	Wood County
Region II				
Clarksburg Fire UHF	<input type="checkbox"/> Conv. <input type="checkbox"/> Trunked	<input checked="" type="checkbox"/> Analog <input type="checkbox"/> Digital	UHF	Harrison County
Clarksburg Police UHF	<input checked="" type="checkbox"/> Conv. <input type="checkbox"/> Trunked	<input checked="" type="checkbox"/> Analog <input type="checkbox"/> Digital	UHF	Harrison County
Marshall UHF	<input checked="" type="checkbox"/> Conv. <input type="checkbox"/> Trunked	<input checked="" type="checkbox"/> Analog <input type="checkbox"/> Digital	UHF	Marshall/Ohio/Wetzel
Marshall VHF	<input checked="" type="checkbox"/> Conv. <input type="checkbox"/> Trunked	<input checked="" type="checkbox"/> Analog <input type="checkbox"/> Digital	VHF	Marshall/Ohio/Wetzel



Radio System Name	Type	Mode	Band	Operating Area
Ohio County UHF Radio System	<input type="checkbox"/> Conv. <input checked="" type="checkbox"/> Trunked	<input type="checkbox"/> Analog <input checked="" type="checkbox"/> Digital	UHF	Northern Panhandle
Ohio County VHF Radio System	<input checked="" type="checkbox"/> Conv. <input type="checkbox"/> Trunked	<input checked="" type="checkbox"/> Analog <input type="checkbox"/> Digital	VHF	Ohio County
Preston County Legacy	<input checked="" type="checkbox"/> Conv. <input type="checkbox"/> Trunked	<input checked="" type="checkbox"/> Analog <input type="checkbox"/> Digital	VHF	Preston County
Wheeling, City of	<input type="checkbox"/> Conv. <input checked="" type="checkbox"/> Trunked	<input checked="" type="checkbox"/> Analog <input type="checkbox"/> Digital	800 MHz	City of Wheeling
Wetzel 911	<input checked="" type="checkbox"/> Conv. <input type="checkbox"/> Trunked	<input checked="" type="checkbox"/> Analog <input type="checkbox"/> Digital	VHF-Low, VHF, UHF	Wetzel County
Region III				
Jefferson County 800 Trunked	<input type="checkbox"/> Conv. <input checked="" type="checkbox"/> Trunked	<input type="checkbox"/> Analog <input checked="" type="checkbox"/> Digital	800 MHz	Jefferson County
Jefferson County UHF Conventional	<input checked="" type="checkbox"/> Conv. <input type="checkbox"/> Trunked	<input checked="" type="checkbox"/> Analog <input type="checkbox"/> Digital	UHF	Jefferson
Jefferson County VHF Conventional	<input checked="" type="checkbox"/> Conv. <input type="checkbox"/> Trunked	<input checked="" type="checkbox"/> Analog <input type="checkbox"/> Digital	VHF	Jefferson
Mineral County VHF	<input checked="" type="checkbox"/> Conv. <input type="checkbox"/> Trunked	<input checked="" type="checkbox"/> Analog <input type="checkbox"/> Digital	VHF	Mineral
Morgan County	<input type="checkbox"/> Conv. <input type="checkbox"/> Trunked	<input type="checkbox"/> Analog <input type="checkbox"/> Digital	UHF	Morgan
Morgan County	<input type="checkbox"/> Conv. <input type="checkbox"/> Trunked	<input type="checkbox"/> Analog <input type="checkbox"/> Digital	VHF	Morgan
Region IV				
Pendleton Low Band Conventional (Legacy)	<input checked="" type="checkbox"/> Conv. <input type="checkbox"/> Trunked	<input checked="" type="checkbox"/> Analog <input type="checkbox"/> Digital	VHF Low	Pendleton County
Pendleton County VHF Conventional System	<input checked="" type="checkbox"/> Conv. <input type="checkbox"/> Trunked	<input checked="" type="checkbox"/> Analog <input type="checkbox"/> Digital	VHF	Pendleton County



Radio System Name	Type	Mode	Band	Operating Area
Pendleton County UHF System	<input checked="" type="checkbox"/> Conv. <input type="checkbox"/> Trunked	<input checked="" type="checkbox"/> Analog <input type="checkbox"/> Digital	UHF	Pendleton County
Region V				
Mercer County VHF	<input checked="" type="checkbox"/> Conv. <input type="checkbox"/> Trunked	<input checked="" type="checkbox"/> Analog <input type="checkbox"/> Digital	VHF	Mercer County
Mercer County UHF	<input checked="" type="checkbox"/> Conv. <input type="checkbox"/> Trunked	<input checked="" type="checkbox"/> Analog <input type="checkbox"/> Digital	UHF	Mercer County
Raleigh County Conventional VHF	<input checked="" type="checkbox"/> Conv. <input type="checkbox"/> Trunked	<input checked="" type="checkbox"/> Analog <input checked="" type="checkbox"/> Digital	VHF	Raleigh County
Raleigh County Conventional UHF	<input checked="" type="checkbox"/> Conv. <input type="checkbox"/> Trunked	<input checked="" type="checkbox"/> Analog <input checked="" type="checkbox"/> Digital	UHF	Raleigh County
Region VI				
Cabell County UHF	<input checked="" type="checkbox"/> Conv. <input type="checkbox"/> Trunked	<input checked="" type="checkbox"/> Analog <input type="checkbox"/> Digital	UHF	Cabell County
Logan County 911	<input checked="" type="checkbox"/> Conv. <input type="checkbox"/> Trunked	<input checked="" type="checkbox"/> Analog <input type="checkbox"/> Digital	VHF	Logan County
Mason County Legacy	<input checked="" type="checkbox"/> Conv. <input type="checkbox"/> Trunked	<input type="checkbox"/> Analog <input type="checkbox"/> Digital	UHF	Mason County
Mason City VFD	<input checked="" type="checkbox"/> Conv. <input type="checkbox"/> Trunked	<input type="checkbox"/> Analog <input type="checkbox"/> Digital	UHF	Town of Mason
Point Pleasant Fire UHF	<input checked="" type="checkbox"/> Conv. <input type="checkbox"/> Trunked	<input type="checkbox"/> Analog <input type="checkbox"/> Digital	UHF	Town of Point Pleasant

SIRN SYSTEM

The West Virginia Statewide Interoperable Radio Network (SIRN) serves as the foundation of statewide interoperable communications and is used for day-to-day state and local agency interoperability and statewide interoperability for Level 3 and above incidents and events.



The SIRN Platform is a statewide P-25 compliant, digital trunked radio system operating on the UHF frequency band. SIRN provides a high probability of mobile radio coverage throughout the state using more than 85 radio tower sites, with new sites being built each year.

Statewide and Local Shared Channels and Talkgroups

INTEROPERABILITY/SHARED CHANNELS – VFH LOW BAND

INTEROPERABILITY/SHARED CHANNELS – VHF LOW BAND						
Channel Name	Mob RX/Base TX		Mob TX/Base RX		Used By	Usage
	Freq	Tone	Freq	Tone		
FIRE/EMS Low Band	46.42	141.3	46.42	141.3	Fire EMS	Pendleton Co
LAW	39.16	141.3	39.16	141.3	Law	Pendleton Co

Unless otherwise indicated, all channels are Analog Digital Mixed
 Unless otherwise indicated, all channels are Narrowband Wideband

STATEWIDE CHANNEL PLAN – VHF LOW BAND

STATEWIDE CHANNEL PLAN – VHF LOW BAND						
Channel Name	Mob RX/Base TX		Mob TX/Base RX		Used By	Usage
	Freq	Tone	Freq	Tone		
LLAW1	39.46	CSQ	45.86	156.7	Law	See NIFOG for Rules of Use
LLAW1D	39.46	CSQ	39.46	156.7	Law	
LFIRE2	39.48	CSQ	45.88	156.7	Fire	
LFIRE2D	39.48	CSQ	39.48	156.7	Fire	
LLAW3	45.86	CSQ	39.46	156.7	Law	
LLAW3D	45.86	CSQ	45.86	156.7	Law	
LFIRE4	45.88	CSQ	39.48	156.7	Fire	
LFIRE4D	45.88	CSQ	45.88	156.7	Fire	

Unless otherwise indicated, all channels are Analog Digital Mixed
 Unless otherwise indicated, all channels are Narrowband Wideband



INTEROPERABILITY/SHARED CHANNELS – VHF HIGH BAND

INTEROPERABILITY/SHARED CHANNELS – VHF HIGH BAND						
Channel Name	Mob RX/Base TX		Mob TX/Base RX		Used By	Usage
	Freq	Tone	Freq	Tone		
Statewide						
159.225	159.2250	100	159.2250	100	WVDA Staff	Statewide DEP
Nat. Police	150.7975	127.3	154.1675	127.3		Statewide DEP
Region 1						
VHF Broomstick - N	155.2050	123.0	160.7900	D223N	Public Safety	Calhoun Co
VHF Mt. Zion (Main)	155.2050	123.0	150.7900	123.0	Public Safety	Calhoun Co
VHF Mule Knob – S	155.2050	123.0	150.7900	D343	Public Safety	Calhoun Co
Law	155.6700	D125	153.9350	D125	Law	Jackson Co
Fire/EMS/EMA/ Law	155.8350	D026	153.9650	D026	Public Safety	Jackson Co
EMS/Fire/ Law/EMA	155.6400	D245	153.8600	D245	Public Safety	Jackson Co
Law/EMS/ Fire/EMA/ State Agencies	155.7900	D315	153.9200	D315	Public Safety	Jackson Co
EM	155.8750		155.8950		EM	Pleasants Co
EMS	154.4300	88.5	153.7700	88.5	EMS	Wood Co
Fire	154.2200	123.0	153.9500	123.0	Fire	Wood Co
Region II						
MSH Fire	153.8600	D506	158.9550	D506	ALL	Marshall - Upper Ohio Valley Cmd
MSH Fire Rptr	154.3850	D506	154.3850	D506	ALL	SIRN - Marshall
MSH FG 1	152.2100	D506	154.3850	D506	ALL	SIRN - Marshall
MSH FG 2	154.0700	D506	154.0700	D506	ALL	SIRN - Marshall
MSH FG 3	155.7375	D506	158.9775	D506	ALL	SIRN - Marshall



INTEROPERABILITY/SHARED CHANNELS – VHF HIGH BAND

Channel Name	Mob RX/Base TX		Mob TX/Base RX		Used By	Usage
	Freq	Tone	Freq	Tone		
Moundsville Fire	154.1525	D506	154.1525	D506	ALL	SIRN - Marshall
Glen Dale Fire	154.3100	D506	154.3100	D506	ALL	SIRN - Marshall
MSH Tanker TF	156.2250	91.5	150.7900	91.5	ALL	SIRN - Marshall
Moundsville PD	154.0475	71.9	151.2125	71.9	ALL	SIRN - Marshall
Glen Dale PD	155.2500	192.8	154.2500	192.8	Law	SIRN - Marshall
McMechen PD	154.8600	D411	158.8125	D411	Law	SIRN - Marshall
Benwood PD	155.1300	88.5	155.1300	88.5	Law	SIRN - Marshall
Cameron PD	155.0775	D155	155.0775	D155	Law	SIRN - Marshall
MSH Sheriff	154.9725	D143	158.8425	D143	Law	SIRN - Marshall
LAW NORTH	159.3075	71.9	154.8825	71.9	Law	SIRN - Marshall
LAW CENTRAL	159.2175	103.5	153.9425	103.5	Law	Preston Co
LAW SOUTH	156.2325	103.5	153.9425	103.5	Daily Ops	Preston Co
NORTH DISP	155.3175	103.5	153.9425	103.5	Daily Ops	Preston Co
CENTRAL DISP	154.3925	D245	159.1050	D245	Daily Ops	Preston Co
SOUTH DISP	154.1525	D315	151.4825	D 315	Daily Ops	Preston Co
WEST DISP	155.1150	D152	158.7450	D 152	Daily Ops	Preston Co
TRLR RPTR	154.8525	D431	151.1900	D431	Daily Ops	Preston Co
PC PAGING	154.4225	D664	159.1050	D664	All	Preston Co
EMS Direct	154.9800	CSQ	154.9800	CSQ	Paging	Preston Co
EMS Repeater	155.2950	D125	155.2950	D125	EMS	Wetzel Co
EMS Hundred	155.3850	D125	150.7750	D125	EMS	Wetzel Co
Wetzel Hosp	155.3850	D125	150.7750	D125	EMS	Wetzel Co
WVU Med Comm	155.3400	D162	155.3400	D162	Medical	Wetzel Co
EMA Duffy	155.3400	CSQ	155.3400	179.9	Medical	Wetzel Co
EMA Barker	154.1000	D152	150.8050	D152	EMA	Wetzel Co
EMA Hundred	154.1750	D152	156.0150	D152	EMA	Wetzel Co
EMA Direct	154.1750	D152	156.0150	D152	EMA	Wetzel Co



INTEROPERABILITY/SHARED CHANNELS – VHF HIGH BAND						
Channel Name	Mob RX/Base TX		Mob TX/Base RX		Used By	Usage
	Freq	Tone	Freq	Tone		
Region III						
JEF FIRE PAGE			153.8600	162.2	Fire	Jefferson Co
JCMUT1	153.8150	162.2	153.8150	162.2	All Users	Jefferson Co
JCMUT2	153.8900	162.2	153.8900	162.2	All Users	Jefferson Co
VCALL10	155.7525	156.7	155.7525	156.7	All Users	Jefferson Co
VTAC11	151.1375	156.7	151.1375	156.7	All Users	Jefferson Co
VFIRE21	154.2800	156.7	154.2800	156.7	All Users	Jefferson Co
VLAW31	155.4750	156.7	155.4750	156.7	All Users	Jefferson Co
Channel 9 ND	155.8350	100.0	153.8900	67.0	N. Irons Mtn- Cumb	Mineral Co
Channel 10 N	155.8350	100.0	153.8900	127.3	N. Wiley Ford	Mineral Co
Channel 11 E	155.8350	100.0	153.8900	146.2	East Slaty Lick-Ft Ashby	Mineral Co
Channel 12 S	155.8350	100.0	153.8900	167.9	S. New Creek	Mineral Co
Channel 13 W	155.8350	100.0	153.8900	192.8	West Piedmont	Mineral Co
Law North	155.8050	100.0	158.9700	127.3	Wiley Ford	Mineral Co
Law South	155.8050	100.0	158.9700	146.2	S. New Creek	Mineral Co
Law East	155.8050	100.0	158.9700	167.9	East Ft. Ashby	Mineral Co
Law West	155.8050	100.0	158.9700	203.5	West Piedmont	Mineral Co
FG 6	154.2350	100.0	154.2350	100.0	FG	Mineral Co
FG 7	154.4450	100.0	154.4450	100.0	FG	Mineral Co
VTAC 1 South	154.1225	D466	156.1875	D466	FIRE-EMS Tac 1	Morgan Co



INTEROPERABILITY/SHARED CHANNELS – VHF HIGH BAND						
Channel Name	Mob RX/Base TX		Mob TX/Base RX		Used By	Usage
	Freq	Tone	Freq	Tone		
VTAC 2 South	154.1825	D411	156.1425	D411	FIRE-EMS Tac 2	Morgan Co
VTAC 3 South	155.9475	D445	151.3400	D445	FIRE-EMS Tac	Morgan Co
VTAC 1 North	151.1075	D466	156.1875	D466	FIRE-EMS Tac 1	Morgan Co
VTAC 1 East	155.7075	D466	156.1875	D466	FIRE-EMS Tac 1	Morgan Co
VTAC 1 West	154.0850	D466	156.1875	D466	FIRE-EMS Tac 1	Morgan Co
V OPS 5	153.8000	D464	153.8000	D464	FIRE-EMS	Morgan Co
V OPS 6	156.0675	D464	156.0675	D464	FIRE-EMS	Morgan Co
V OPS 7	154.3025	D464	154.3025	D464	FIRE-EMS	Morgan Co
V OPS 8	154.4300	D464	154.4300	D464	FIRE-EMS	Morgan Co
MOR LE 1N	153.7625	203.5	156.2400	203.5	LAW Disp / Tac	Morgan Co
MOR LE 1S	154.0625	203.5	156.2400	203.5	LAW Disp / Tac	Morgan Co
MOR LE 1E	154.0025	203.5	156.2400	203.5	LAW Disp / Tac	Morgan Co
MOR LE 1W	154.1600	203.5	156.2400	203.5	LAW Disp / Tac	Morgan Co
MC Paging	155.1450	D311	RX ONLY	N/A	FIRE-EMS Alert	Morgan Co
Region IV						
VHF EAST (Central & Eastern)	155.2050	141.3	155.2050	141.3	Backup or Interop	Pendleton Co
VHF WEST (Central & Western)	155.2650	141.3	155.2650	141.3		Backup or Interop
Region V						



INTEROPERABILITY/SHARED CHANNELS – VHF HIGH BAND						
Channel Name	Mob RX/Base TX		Mob TX/Base RX		Used By	Usage
	Freq	Tone	Freq	Tone		
Mercer Co Fire	154.4450	D032	153.9600	D032	Fire	Mercer CO
HARPER ROAD SITE	155.6550	D071	154.7250	D043		Raleigh Co
SPRUCE MTN	155.6550	D71	154.7250	D071		Raleigh Co
TAMS MTN	155.6550	D71	154.7250	D032		Raleigh Co
IVY KNOB	155.6550	D71	154.7250	D026		Raleigh Co
BRAGG SITE	155.6550	D71	154.7250	D23		Raleigh Co
WORKMANS KNOB BOONE	155.6550	D71	154.7250	D47		Raleigh Co
SPRUCE MTN	155.9250	D71	158.8200	D71		Raleigh Co
TAMS MTN	155.9250	D71	158.8200	D72		Raleigh Co
IVY KNOB	155.9250	D71	158.8200	D65		Raleigh Co
BRAGG SITE	155.9250	D71	158.8200	D54		Raleigh Co
MUTUAL AID SPRUCE	155.9400	127.3	158.8350	127.3		Raleigh Co
MUTUAL AID TAMS	155.9400	127.3	158.8350	82.5		Raleigh Co
BECKLEY PD	155.1300	110.9	159.0300	110.9		Raleigh Co
BECKLEY FIRE	155.580 0	D051	158.9100	D051		Raleigh Co
FIRE/EMS CO SPRUCE	155.9550	127.3	158.9400	146.2		Raleigh Co
FIRE/EMS CO. TAMS	155.9550	127.3	158.9400	82.5		Raleigh Co
FIRE/EMS CO. IVY	155.9550	127.3	158.9400	186.2		Raleigh Co
FIRE/EMS CO. BRAGG	155.9550	127.3	158.9400	127.3		Raleigh Co
FIRE/EMS CO. FLAT TOP	155.9550	127.3	158.9400	131.8		Raleigh Co
FIRE/EMS CO. MOSSY	155.9550	127.3	158.9400	173.8		Raleigh Co



INTEROPERABILITY/SHARED CHANNELS – VHF HIGH BAND

Channel Name	Mob RX/Base TX		Mob TX/Base RX		Used By	Usage
	Freq	Tone	Freq	Tone		
Region VI						
Lincoln Co Fire/EMS	154.2200	103.5	154.2200	103.5	Fire Tac	Lincoln Co
Lincoln Co Fireground	154.1750	103.5	154.1750	103.5	Fire Tac	Lincoln Co
Lincoln Co Dispatch NW	154.3550	D043	153.9050	D043	Dispatch	Lincoln Co
Lincoln Co Dispatch NE	154.9500	82.5	158.9850	82.5	Dispatch	Lincoln Co
Lincoln Co Dispatch SO	155.8050	D043	153.9050	D043	Dispatch	Lincoln Co
EMS WARD	155.4900	D072	153.8450	D072	Dispatch	Logan Co
EMS SOUTH	155.4900	D071	153.8450	D071	Dispatch	Logan Co
EMS PARK	155.4900	D073	153.8450	D073	Dispatch	Logan Co
EMS NORTH	155.4900	D074	153.8450	D074	Dispatch	Logan Co
FIRE WARD	155.7900	D532	158.9250	D532	Dispatch	Logan Co
FIRE SOUTH	155.7900	D743	158.9250	D743	Dispatch	Logan Co
FIRE PARK	155.7900	D432	158.9250	D432	Dispatch	Logan Co
FIRE NORTH	155.7900	D632	158.9250	D632	Dispatch	Logan Co
FIRE HORSPEN	155.7900	D132	158.9250	D132	Dispatch	Logan Co
LAW WARD	155.6850	D532	153.8150	D532	Dispatch	Logan Co
LAW SOUTH	155.6850	D743	153.8150	D743	Dispatch	Logan Co
LAW PARK	155.6850	D432	153.8150	D432	Dispatch	Logan Co
VHF Direct 1	154.9875	D311	154.9875	D311	Event	Logan Co
VHF Direct 2	158.7450	D311	158.7450	D311	Event	Logan Co
Unless otherwise indicated, all channels are <input checked="" type="checkbox"/> Analog <input type="checkbox"/> Digital <input type="checkbox"/> Mixed Unless otherwise indicated, all channels are <input checked="" type="checkbox"/> Narrowband <input type="checkbox"/> Wideband						



STATEWIDE CHANNEL PLAN – VHF HIGH BAND

STATEWIDE CHANNEL PLAN – VHF High BAND						
Channel Name	Mob RX/Base TX		Mob TX/Base RX		Used By	Usage
	Freq	Tone	Freq	Tone		
VCALL10	155.7525	CSQ	155.7525	156.7	Public Safety	See NIFOG for Rules of Use
VTAC11	151.1375	CSQ	151.1375	156.7	Public Safety	
VTAC12	154.4525	CSQ	154.4525	156.7	Public Safety	
VTAC13	158.7375	CSQ	158.7375	156.7	Public Safety	
VTAC14	159.4725	CSQ	159.4725	156.7	Public Safety	
VTAC17	161.8500	CSQ	157.2500	156.7	Public Safety	
VTAC17D	161.8500	CSQ	161.8500	156.7	Public Safety	
VTAC33	159.4725	CSQ	151.1375	136.5	Public Safety	
VTAC34	158.7375	CSQ	154.4525	136.5	Public Safety	
VTAC35	159.4725	CSQ	158.7375	136.5	Public Safety	
VTAC36	151.1375	CSQ	159.4725	136.5	Public Safety	
VTAC37	154.4525	CSQ	158.7375	136.5	Public Safety	
VTAC38	158.7375	CSQ	159.4725	136.5	Public Safety	
Unless otherwise indicated, all channels are <input checked="" type="checkbox"/> Analog <input type="checkbox"/> Digital <input type="checkbox"/> Mixed Unless otherwise indicated, all channels are <input checked="" type="checkbox"/> Narrowband <input type="checkbox"/> Wideband						



INTEROPERABILITY/SHARED TALKGROUPS – UHF BAND

Interoperability/Shared Talkgroups			
Name	TG ID	Trunked System	Primary Use
R1COMMAND	80000951	SIRN	Call
R1POLICE	80000905	SIRN	Law
R1FIRE	80000901	SIRN	Fire
R1EMS	80000903	SIRN	EMS
R1TAC1	80000915	SIRN	Tactical
R1TAC2	80000917	SIRN	Tactical
R1TAC3	80000919	SIRN	Tactical
R1TAC4	80000921	SIRN	Tactical
R1TAC5	80000981	SIRN	Tactical
R1TAC6	80000983	SIRN	Tactical
R1TAC7	80000985	SIRN	Tactical
R1TAC8	80000987	SIRN	Tactical
R1TAC9	80000989	SIRN	Tactical
R1TAC10	80000991	SIRN	Tactical
911 BAR	80000933	SIRN	Dispatch
911 DOD	80000935	SIRN	Dispatch
911 HAR	80000927	SIRN	Dispatch
911 MAR	80000929	SIRN	Dispatch
911 MON	80000931	SIRN	Dispatch
911 PRE	80000937	SIRN	Dispatch
911 TAY	80000927	SIRN	Dispatch
911 RIT	80000935	SIRN	Dispatch
R2COMMAND	80001951	SIRN	Call
R2POLICE	80001905	SIRN	Law
R2FIRE	80001901	SIRN	Fire
R2EMS	80001903	SIRN	EMS
R2TAC1	80001915	SIRN	Tactical
R2TAC2	80001917	SIRN	Tactical
R2TAC3	80001919	SIRN	Tactical



Interoperability/Shared Talkgroups			
Name	TG ID	Trunked System	Primary Use
R2TAC4	80001921	SIRN	Tactical
R2TAC5	80001981	SIRN	Tactical
R2TAC6	80001983	SIRN	Tactical
R2TAC7	80001985	SIRN	Tactical
R2TAC8	80001987	SIRN	Tactical
R2TAC9	80001989	SIRN	Tactical
R2TAC10	80001991	SIRN	Tactical
R2TALK1	80001997	SIRN	Tactical
R2TALK2	80001999	SIRN	Tactical
911 BER	80001927	SIRN	Dispatch
911 GRA	80001929	SIRN	Dispatch
911 HAM	80001931	SIRN	Dispatch
911 HRD	80001933	SIRN	Dispatch
911 JEF	80001935	SIRN	Dispatch
911 MIN	80001937	SIRN	Dispatch
911 MOR	80001939	SIRN	Dispatch
R3COMMAND	80002951	SIRN	Call
R3POLICE	80002905	SIRN	Law
R3FIRE	80002901	SIRN	Fire
R3EMS	80002903	SIRN	EMS
R3TAC1	80002915	SIRN	Tactical
R3TAC2	80002917	SIRN	Tactical
R3TAC3	80002919	SIRN	Tactical
R3TAC4	80002921	SIRN	Tactical
R3TAC5	80002981	SIRN	Tactical
R3TAC6	80002983	SIRN	Tactical
R3TAC7	80002985	SIRN	Tactical
R3TAC8	80002987	SIRN	Tactical
R3TAC9	80002989	SIRN	Tactical
R3TAC10	80002991	SIRN	Tactical



Interoperability/Shared Talkgroups			
Name	TG ID	Trunked System	Primary Use
R3TALK1	80002997	SIRN	Tactical
R3TALK2	80002999	SIRN	Tactical
911 BRK	80002929	SIRN	Dispatch
911 HAN	80002931	SIRN	Dispatch
911 MSH	80002933	SIRN	Dispatch
911 OHI	80002927	SIRN	Dispatch
911 TYL	80002935	SIRN	Dispatch
911 WTZ	80002937	SIRN	Dispatch
MIN 911 EFR	1601	SIRN	Dispatch
MIN 911 LAW	1607	SIRN	Law Dispatch
MIN TAC 1	1633	SIRN	Tactical
MIN TAC 2	1635	SIRN	Tactical
MIN TAC 3	1637	SIRN	Tactical
MIN TAC 4	1639	SIRN	Tactical
MIN TAC 5	1634	SIRN	Tactical
MIN EVENT 1	1657	SIRN	Special Events
MIN KEYS PD	1606	SIRN	Tactical
MOR F DISP	1701	SIRN	Dispatch
MOR LAW 1	1707	SIRN	Law Dispatch
MOR TAC 1	1733	SIRN	Tactical
MOR TAC 2	1735	SIRN	Tactical
MOR TAC 3	1737	SIRN	Tactical
MOR TAC 4	1739	SIRN	Tactical
MOR TAC 5	1734	SIRN	Tactical
MOR EVENT 1	1757	SIRN	Special Events
MOR EVENT 2	1759	SIRN	Special Events
MOR EVENT 3	1761	SIRN	Special Events
MOR EVENT 4	1763	SIRN	Special Events
R4COMMAND	80002951	SIRN	Call
R4POLICE	80002905	SIRN	Law



Interoperability/Shared Talkgroups			
Name	TG ID	Trunked System	Primary Use
R4FIRE	80002901	SIRN	Fire
R4EMS	80002903	SIRN	EMS
R4TAC1	80002915	SIRN	Tactical
R4TAC2	80002917	SIRN	Tactical
R4TAC3	80002919	SIRN	Tactical
R4TAC4	80002921	SIRN	Tactical
R4TAC5	80002981	SIRN	Tactical
R4TAC6	80002983	SIRN	Tactical
R4TAC7	80002985	SIRN	Tactical
R4TAC8	80002987	SIRN	Tactical
R4TAC9	80002989	SIRN	Tactical
R4TAC10	80002991	SIRN	Tactical
R4TALK1	80002997	SIRN	Tactical
R4TALK2	80002999	SIRN	Tactical
911 GIL	80003929	SIRN	Dispatch
911 LEW	80003929	SIRN	Dispatch
911 PEN	80003931	SIRN	Dispatch
911 POC	80003933	SIRN	Dispatch
911 RAN	80003927	SIRN	Dispatch
911 TUC	80003935	SIRN	Dispatch
911 UPS	80003937	SIRN	Dispatch
911 WEB	80003939	SIRN	Dispatch
R5COMMAND	80004951	SIRN	Call
R5POLICE	80004905	SIRN	Law
R5FIRE	80004901	SIRN	Fire
R5EMS	80004903	SIRN	EMS
R5TAC1	80004915	SIRN	Tactical
R5TAC2	80004917	SIRN	Tactical
R5TAC3	80004919	SIRN	Tactical
R5TAC4	80004921	SIRN	Tactical



Interoperability/Shared Talkgroups			
Name	TG ID	Trunked System	Primary Use
R5TAC5	80004981	SIRN	Tactical
R5TAC6	80004983	SIRN	Tactical
R5TAC7	80004985	SIRN	Tactical
R5TAC8	80004987	SIRN	Tactical
R5TAC9	80004989	SIRN	Tactical
R5TAC10	80004991	SIRN	Tactical
R5TALK1	80004997	SIRN	Tactical
R5TALK2	80004999	SIRN	Tactical
911 BNE	80004929	SIRN	Dispatch
911 CAB	80004927	SIRN	Dispatch
911 LIN	80004931	SIRN	Dispatch
911 LOG	80004933	SIRN	Dispatch
911 MAS	80004935	SIRN	Dispatch
911 MNG	80004937	SIRN	Dispatch
911 WAY	80004939	SIRN	Dispatch
R6COMMAND	80005951	SIRN	Call
R6POLICE	80005905	SIRN	Law
R3FIRE	80005901	SIRN	Fire
R3EMS	80005903	SIRN	EMS
R6TAC1	80005915	SIRN	Tactical
R6TAC2	80005917	SIRN	Tactical
R6TAC3	80005919	SIRN	Tactical
R6TAC4	80005921	SIRN	Tactical
R6TAC5	80005981	SIRN	Tactical
R6TAC6	80005983	SIRN	Tactical
R6TAC7	80005985	SIRN	Tactical
R6TAC8	80005987	SIRN	Tactical
R6TAC9	80005989	SIRN	Tactical
R6TAC10	80005991	SIRN	Tactical
R6TALK1	80005997	SIRN	Tactical



Interoperability/Shared Talkgroups			
Name	TG ID	Trunked System	Primary Use
R6TALK2	80005999	SIRN	Tactical
911 FAY	80005929	SIRN	Dispatch
911 GRE	80005931	SIRN	Dispatch
911 MCD	80005933	SIRN	Dispatch
911 MER	80005935	SIRN	Dispatch
911 MNR	80005937	SIRN	Dispatch
911 RAL	80005927	SIRN	Dispatch
911 SUM	80005939	SIRN	Dispatch
911 WYO	80005941	SIRN	Dispatch
CAB CNTY FIRE		SIRN	FIRE
CAB HNT FIRE		SIRN	FIRE
CAB EMS		SIRN	EMS
CAB CNTY POL		SIRN	LAW
CAB MLTN POL		SIRN	LAW
CAB HNT POL		SIRN	LAW
CAB BRB POL		SIRN	LAW
CAB MUPD		SIRN	LAW
CAB ALL FIRE		SIRN	FIRE
CAB EMS PVT		SIRN	EMS
CAB ALL POL		SIRN	LAW
CAB HNT PD PVT		SIRN	LAW
CAB BRB PD PVT		SIRN	LAW
CAB SHER PRV		SIRN	LAW
CAB BVFD		SIRN	FIRE
CAB EMA PVT		SIRN	OES
CAB HNT FD PVT		SIRN	FIRE
CAB TAC 1		SIRN	ALL PS
CAB 4134		SIRN	ALL PS
CAB TAC 2		SIRN	ALL PS
CAB TAC 3		SIRN	All PS



Interoperability/Shared Talkgroups			
Name	TG ID	Trunked System	Primary Use
CAB TAC 4		SIRN	Public Safety
CAB PTAC 1		SIRN	Law
CAB HVCDTF PVT		SIRN	Law
CAB PTAC 2		SIRN	LAW
CAB DEA/ATF PVT		SIRN	LAW
CAB TFORCE 1		SIRN	LAW
CAB TFORCE 2		SIRN	LAW
CAB LOC GOV		SIRN	LOC GOV
CAB EMA		SIRN	OES
CAB TALK 1		SIRN	ALL PS
CAB TALK 2		SIRN	ALL PS
CAB EVENT 1		SIRN	ALL PS
CAB EVENT 2		SIRN	ALL PS
CAB EVENT 3		SIRN	ALL PS
CAB EVENT 4		SIRN	ALL PS
CAB HEALTH 1		SIRN	Public Health
CAB HEALTH 2		SIRN	Public Health
CAB BOE 1		SIRN	BOE
CAB BOE 2		SIRN	BOE
CAB BOE 3		SIRN	BOE
CAB BOE 4		SIRN	BOE
CAB SECTAC 1		SIRN	LAW
CAB SECTAC 2		SIRN	LAW
CAB PROB		SIRN	LAW
CAB MPD PVT		SIRN	LAW
CAB HNT CMN		SIRN	ALL PS
CAB RGRP 1		SIRN	ALL PS
CAB RGRP 2		SIRN	ALL PS



Interoperability/Shared Talkgroups			
Name	TG ID	Trunked System	Primary Use
CAB HAIL		SIRN	ALL PS
R7COMMAND	80006951	SIRN	Call
R7POLICE	80006905	SIRN	Law
R7FIRE	80006901	SIRN	Fire
R7EMS	80006903	SIRN	EMS
R7TAC1	80006915	SIRN	Tactical
R7TAC2	80006917	SIRN	Tactical
R7TAC3	80006919	SIRN	Tactical
R7TAC4	80006921	SIRN	Tactical
R7TAC5	80006981	SIRN	Tactical
R7TAC6	80006983	SIRN	Tactical
R7TAC7	80006985	SIRN	Tactical
R7TAC8	80006987	SIRN	Tactical
R7TAC9	80006989	SIRN	Tactical
R7TAC10	80006991	SIRN	Tactical
R7TALK1	80006997	SIRN	Tactical
R7TALK2	80006999	SIRN	Tactical
911 BRA	80006929	SIRN	Dispatch
911 CLA	80006931	SIRN	Dispatch
911 KAN	80006927	SIRN	Dispatch
911 NIC	80006931	SIRN	Dispatch
911 PUT	80006933	SIRN	Dispatch
R8COMMAND	80007951	SIRN	Call
R8POLICE	80007905	SIRN	Law
R8FIRE	80007901	SIRN	Fire
R8EMS	80007903	SIRN	EMS
R8TAC1	80007915	SIRN	Tactical
R8TAC2	80007917	SIRN	Tactical
R8TAC3	80007919	SIRN	Tactical
R8TAC4	80007921	SIRN	Tactical



Interoperability/Shared Talkgroups			
Name	TG ID	Trunked System	Primary Use
R8TAC5	80007981	SIRN	Tactical
R8TAC6	80007983	SIRN	Tactical
R8TAC7	80007985	SIRN	Tactical
R8TAC8	80007987	SIRN	Tactical
R8TAC9	80007989	SIRN	Tactical
R8TAC10	80007991	SIRN	Tactical
R8TALK1	80007997	SIRN	Tactical
R8TALK2	80007999	SIRN	Tactical
BSA 01	80008501	SIRN	
BSA 02	80008502	SIRN	
BSA 03	80008503	SIRN	
BSA 04	80008504	SIRN	
BSA 05	80008505	SIRN	
BSA 06	80008506	SIRN	
BSA 07	80008507	SIRN	
BSA 08	80008508	SIRN	
BSA 09	80008509	SIRN	
BSA 10	80008510	SIRN	
BSA 11	80008511	SIRN	
BSA 12	80008512	SIRN	
BSA 13	80008513	SIRN	
BSA 14	80008514	SIRN	
BSA 15	80008515	SIRN	
BSA 16	80008516	SIRN	
BSA 17	80008517	SIRN	
BSA 18	80008518	SIRN	
BSA 19	80008519	SIRN	
BSA 20	80008520	SIRN	
BSA 21	80008521	SIRN	
BSA 22	80008522	SIRN	



Interoperability/Shared Talkgroups			
Name	TG ID	Trunked System	Primary Use
BSA 23	80008523	SIRN	
BSA 24	80008524	SIRN	
BSA 25	80008525	SIRN	
BSA 26	80008526	SIRN	
BSA 27	80008527	SIRN	
BSA 28	80008528	SIRN	
BSA 29	80008529	SIRN	
BSA 30	80008530	SIRN	
BSA 31	80008531	SIRN	
BSA 32	80008532	SIRN	
BSA 33	80008533	SIRN	
BSA 34	80008534	SIRN	
BSA 35	80008535	SIRN	
BSA 36	80008536	SIRN	
BSA 37	80008537	SIRN	
BSA 38	80008538	SIRN	
BSA 39	80008539	SIRN	
BSA 40	80008540	SIRN	
BSA 41	80008541	SIRN	
BSA 42	80008542	SIRN	
BSA 43	80008543	SIRN	
BSA 44	80008544	SIRN	
BSA 45	80008545	SIRN	
BSA 46	80008546	SIRN	
BSA 47	80008547	SIRN	
BSA 48	80008548	SIRN	
BSA 49	80008549	SIRN	
BSA 50	80008550	SIRN	
BSA 51	80008551	SIRN	
BSA 52	80008552	SIRN	



Interoperability/Shared Talkgroups			
Name	TG ID	Trunked System	Primary Use
BSA 53	80008553	SIRN	
BSA 54	80008554	SIRN	
BSA 55	80008555	SIRN	
BSA 56	80008556	SIRN	
BSA 57	80008557	SIRN	
BSA 58	80008558	SIRN	
BSA 59	80008559	SIRN	
BSA 60	80008560	SIRN	
BSA 61	80008561	SIRN	
BSA 62	80008562	SIRN	
BSA 63	80008563	SIRN	
BSA 64	80008564	SIRN	
DEP 1		SIRN	(SIRN Assigned)
DEP TAC		SIRN	Specific Events (SIRN Assigned)
WVDA 1	80009352	SIRN	Specific Events
WVDA 2	80009353	SIRN	Specific Events
WVDA 3	80009354	SIRN	Specific Events
WVDA 4	80009355	SIRN	Specific Events
WVDA 5	80009356	SIRN	Specific Events
WVDOT 3	80009304	SIRN	WV DOT
WVDOT 4	80009306	SIRN	WV DOT
DHSEM 1	80009771	SIRN	WV DHSEM
DHSEM 2	80009773	SIRN	WV DHSEM
WVSFM 1	80009181	SIRN	WV State Fire Marshal
WVSFM 2	80009182	SIRN	WV State Fire Marshal
RRTTGA	80009701	SIRN	
RRTTGB	80009703	SIRN	
CAPPOL 1	80009401	SIRN	Capitol Police
CAPPOL 2	80009403	SIRN	Capitol Police



Interoperability/Shared Talkgroups			
Name	TG ID	Trunked System	Primary Use
WVME 1	80009950	SIRN	WVME
WVME 5	80009958	SIRN	WVME
SP SHINN	80009001	SIRN	WV State Police
SP MDSVLE	80009003	SIRN	WV State Police
SP CTOWN	80009005	SIRN	WV State Police
SP ROMNEY	80009007	SIRN	WV State Police
SP ELKINS	80009009	SIRN	WV State Police
SP CHAS	80009011	SIRN	WV State Police
SP PKBURG	80009013	SIRN	WV State Police
SP HUNT	80009015	SIRN	WV State Police
SP LOGAN	80009017	SIRN	WV State Police
SP BECKLEY	80009019	SIRN	WV State Police
WESCOM A	80009851	SIRN	MEDCOM
WESCOM B	80009853	SIRN	MEDCOM
WESCOM C	80009855	SIRN	MEDCOM
WESCOM D	80009857	SIRN	MEDCOM
WESCOM E	80009859	SIRN	MEDCOM
WESCOM F	80009877	SIRN	MEDCOM
WVUMED A	80009821	SIRN	MEDCOM
WVUMED B	80009823	SIRN	MEDCOM
WVUMED C	80009825	SIRN	MEDCOM
WVUMED D	80009827	SIRN	MEDCOM
WVUMED E	80009829	SIRN	MEDCOM
WVUMED F	80009871	SIRN	MEDCOM
BCKMED A	80009861	SIRN	MEDCOM
BCKMED B	80009863	SIRN	MEDCOM
BCKMED C	80009865	SIRN	MEDCOM
BCKMED D	80009867	SIRN	MEDCOM
BCKMED E	80009869	SIRN	MEDCOM
BCKMED F	80009879	SIRN	MEDCOM



Interoperability/Shared Talkgroups			
Name	TG ID	Trunked System	Primary Use
CHAMED A	80009831	SIRN	MEDCOM
CHAMED B	80009833	SIRN	MEDCOM
CHAMED C	80009835	SIRN	MEDCOM
CHAMED D	80009837	SIRN	MEDCOM
CHAMED E	80009839	SIRN	MEDCOM
CHAMED F	80009873	SIRN	MEDCOM
HTNMED A	80009841	SIRN	MEDCOM
HTNMED B	80009843	SIRN	MEDCOM
HTNMED C	80009845	SIRN	MEDCOM
HTNMED D	80009847	SIRN	MEDCOM
HTNMED E	80009849	SIRN	MEDCOM
HTNMED F	80009875	SIRN	MEDCOM
CHAMED A	80009831	SIRN	MEDCOM
CHAMED B	80009833	SIRN	MEDCOM
CHAMED C	80009835	SIRN	MEDCOM
CHAMED D	80009837	SIRN	MEDCOM
CHAMED E	80009839	SIRN	MEDCOM
CHAMED F	80009873	SIRN	MEDCOM
OV Command	B88E	Ohio Co	Upper Ohio Valley Command
Event 1		Ohio Co	Interoperability
Event 2		Ohio Co	Interoperability
Regional Tac		Ohio Co	Interoperability
BLF LAW	1521	Mercer Co	
BLF FIRE	151A	Mercer Co	
PCTN LAW	1523	Mercer Co	
PCT FIRE	151B	Mercer Co	
MER LAW	151F	Mercer Co	
MER FIRE	1519	Mercer Co	
MER EMS	151D	Mercer Co	



Interoperability/Shared Talkgroups			
Name	TG ID	Trunked System	Primary Use
MER TAC 1	1539	Mercer Co	
MR TAC 2	153B	Mercer Co	
MER TAC 3	153D	Mercer Co	
MER TAC 4	153F	Mercer Co	
MER TALK 1	154D	Mercer Co	
MER Talk 2	154F	Mercer Co	
MER 911	172F	Mercer Co	
RAL 911	1727	Raleigh Co	RALEIGH 911
RAL EMA	141F	Raleigh Co	RALEIGH EMA
RAL CO FIRE DISP	13ED	Raleigh Co	RALEIGH FIRE
RAL TAC 1	140D	Raleigh Co	BECKLEY FIRE
RAL TAC 2	140F	Raleigh Co	RALEIGH EMS
RAL TAC 3	1411	Raleigh Co	RALEIGH MUNICIPALITY POLICE
RAL TAC 4	1413	Raleigh Co	RALEIGH TAC 1
RAL TLK 1	1421	Raleigh Co	RALEIGH TAC 2
RAL TLK 2	1423	Raleigh Co	RALEIGH TAC 3
RAL EVT 1	1425	Raleigh Co	RALEIGH TAC 4
RAL EVT 2	1427	Raleigh Co	RALEIGH TALK 1
RAL EVT 3	1429	Raleigh Co	RALEIGH TALK 2
RAL EVT 4	142B	Raleigh Co	RALEIGH EVENT 1
RAL HAIL	144F	Raleigh Co	RALEIGH EVENT 2
ALL FIRE	13F9	Raleigh Co	RALEIGH EVENT 3
ALL EMS	13FB	Raleigh Co	RALEIGH EVENT 4
RCSO DISP	13FD	Raleigh Co	RALEIGH HAIL
RAL HEALTH 1	142D	Raleigh Co	RALEIGH ALL FIRE
RAL HEALTH 2	142F	Raleigh Co	RALEIGH ALL EMS
RAL BOE 1	1431	Raleigh Co	RALEIGH COUNTY SHERIFF



Interoperability/Shared Talkgroups			
Name	TG ID	Trunked System	Primary Use
RAL BOE 2	1433	Raleigh Co	RALEIGH HEALTH 1
RAL BOE 3	1435	Raleigh Co	RALEIGH HEALTH 2
RAL BOE 4	1437	Raleigh Co	RALEIGH BOE 1
BPD DISP	13F5	Raleigh Co	RALEIGH BOE 2
RAL CO Comm Action	141E	Raleigh Co	RALEIGH BOE 3
RAL BPW	144A	Raleigh Co	RALEIGH BOE 4
RAL BPW DISPATCH	140B	Raleigh Co	BECKLEY POLICE

INTEROPERABILITY/SHARED CHANNELS – UHF BAND

INTEROPERABILITY/SHARED CHANNELS – UHF BAND						
Channel Name	Mob RX/Base TX		Mob TX/Base RX		Used By	Usage
	Freq	Tone	Freq	Tone		
SIRN						
MED 1	463.000	151.4	468.000	151.4	EMS	
MED 2	463.025	151.4	468.025	151.4	EMS	
MED 3	463.050	151.4	468.050	151.4	EMS	
MED 4	463.075	151.4	468.075	151.4	EMS	
MED 5	463.100	151.4	465.100	151.4	EMS	
MED 6	463.125	151.4	468.125	151.4	EMS	
MED 7	463.150	151.4	468.150	151.4	EMS	
MED 8	463.175	151.4	468.175	151.4	EMS	
CALL 9	462.950		467.950		EMS	
MED 10	462.975		467.975		EMS	
HELO 1	468.000	151.4	468.000	151.4	EMS	
HELO 2	468.025	151.4	468.025	151.4	EMS	
State Agency						
WVDEP	465.2875	D115	465.2875	D115		
Region I						
Sheriff Barker	460.3250	D226	465.3250	D226	Law	Wetzel Co



INTEROPERABILITY/SHARED CHANNELS – UHF BAND						
Channel Name	Mob RX/Base TX		Mob TX/Base RX		Used By	Usage
	Freq	Tone	Freq	Tone		
Sheriff Duffy	460.3250	D226	465.3250	D152	Law	Wetzel Co
Sheriff Hundred	460.3250	D226	465.3250	D115	Law	Wetzel Co
Sheriff Direct	460.3250	D226	460.3250	D226	Law	Wetzel Co
Fire Barker	460.6125	D162	465.6125	D162	Law	Wetzel Co
Fire	460.0625	D226	465.3250	114.8	Fire	Wetzel Co
Region II						
OHI/MSH T/A 1	458.2125	D293	458.2125	D293		Marshall Co
OHI/MSH T/A 2	453.4625	D293	453.4625	D293		Marshall Co
OHI/MSH T/A 3	458.4625	D293	458.4625	D293		Marshall Co
Region III						
Law Conventional	458.6375	D664	458.6375	146.2	Law	Jefferson Co
Fire Conventional 1	458.5625	D466	458.5625	127.3	Fire/EMS	Jefferson Co
Fire Conventional 2	453.5625	D466	453.5625	94.8	Fire/EMS	Jefferson Co
Gov't Conventional	453.6375	D664	453.6375	156.7	Local Govt	Jefferson Co
HELO1	468.0000	151.4	468.0000	179.9	Public Safety	Jefferson Co
Region IV						
PenCo DIRECT 1	458.3750	141.3	458.3750	141.3	All	Pendleton Co
PenCo DIRECT 2	458.8750	141.3	458.8750	141.3	All	Pendleton Co
PenCo FIRE DIRECT	458.6000	141.3	458.6000	141.3	Fire	Pendleton Co
PenCo EMS DIRECT	458.7750	141.3	458.7750	141.3	EMS	Pendleton Co
PenCo Police DIRECT	458.5500	141.3	458.5500	141.3	Law	Pendleton Co
Region V						
Spruce UHF - BACKUP	453.8000	186.2	453.8000	186.2	Police	Raleigh Co



INTEROPERABILITY/SHARED CHANNELS – UHF BAND						
Channel Name	Mob RX/Base TX		Mob TX/Base RX		Used By	Usage
	Freq	Tone	Freq	Tone		
Bragg UHF - BACKUP	460.5750	151.4	460.5750	151.4		Raleigh Co
SPRUCE FIRE	453.8000	186.2	458.8000	186.2	Fire	Raleigh Co
TAMS FIRE	453.8000	186.2	458.8000	82.5	Fire	Raleigh Co
BRAGG FIRE	453.8000	186.2	458.8000	127.3	Fire	Raleigh Co
IVY FIRE	453.8000	186.2	458.8000	146.2	Fire	Raleigh Co
FLAT TOP FIRE	453.8000	186.2	458.8000	131.8	Fire	Raleigh Co
MOSSY FIRE	453.8000	186.2	458.8000	179.9	Fire	Raleigh Co
BECKLEY FIRE	453.8000	186.2	458.8000	103.5	Fire	Raleigh Co
Bragg UHF - BACKUP	460.5750	151.4	465.5750	151.4		Raleigh Co
Ivy UHF - BACKUP	451.5000	88.5	456.0000	88.5		Raleigh Co
Law UHF Backup - Beckley	453.6375	88.5	458.6375	103.5	Law	Raleigh Co
Law UHF Backup - Tams	453.6375	88.5	458.6375	82.5	Law	Raleigh Co
Law UHF Backup - Ivy	453.6375	88.5	458.6375	88.5	Law	Raleigh Co
Region VI						
DIRT Barkers	453.7000	D331N	458.7000	D073N	Public Safety	Cabell Co
DIRT Rotary	453.7000	D331N	458.7000	D054N	Public Safety	Cabell Co
DIRT Porters	453.7000	D331N	458.7000	D043N	Public Safety	Cabell Co
DIRT Tac 1	453.1875	151.4	453.1875	151.4	Public Safety	Cabell Co
DIRT Tac 2	458.5375	151.4	458.5375	151.4	Public Safety	Cabell Co



INTEROPERABILITY/SHARED CHANNELS – UHF BAND						
Channel Name	Mob RX/Base TX		Mob TX/Base RX		Used By	Usage
	Freq	Tone	Freq	Tone		
DIRT Mobile	453.7000	D331N	458.7000	D331N	Public Safety	Cabell Co
DIRT Channel 2	453.9375	D226N	458.9375	D226N	Public Safety	Cabell Co
EMS Dispatch	460.4250	D155N	465.4250	D155N	EMS	Cabell Co
EMS Transport Paging	460.3000	D155N	465.3000	D155N	EMS	Cabell Co
Sheriff Dispatch	453.7250	D205N	458.7250	D205N	LAW	Cabell Co
Sheriff Courthouse	460.0750	192.8	460.0750	192.8	LAW	Cabell Co
VFD Barker	460.2250	D125N	465.2250	D073N	FIRE	Cabell Co
VFD Culloden	460.2250	D125N	465.2250	D065N	FIRE	Cabell Co
VFD Culloden Cross Band Repeater	155.9250	162.2	155.9250	162.2	FIRE	Cabell Co
VFD Porter	460.2250	D125N	465.2250	D043N	FIRE	Cabell Co
VFD Rotary	460.2250	D125N	465.2250	D054N	FIRE	Cabell Co
Huntington FD Dispatch UHF	453.6750	D125N	458.6750	D125N	FIRE	Cabell Co
Huntington FD Dispatch VHF	154.4300	D506N	153.7700	D506N	FIRE	Cabell Co
Barboursville PD	460.5000	D205N	465.5000	D205N	LAW	Cabell Co
Barboursville VFD F1	453.8000	114.8	458.8000	118.8	FIRE	Cabell Co
Barboursville VFD F3	453.6000	103.5	458.6000	107.2	FIRE	Cabell Co
Barboursville VFD Rotary Tower	453.8000	114.8	458.8000	136.5	FIRE	Cabell Co
Milton FD F-1	460.5875	D125N	465.5875	D125N	FIRE	Cabell Co
Milton FD F-2	460.5875	D073N	465.5875	D073N	FIRE	Cabell Co



INTEROPERABILITY/SHARED CHANNELS – UHF BAND

Channel Name	Mob RX/Base TX		Mob TX/Base RX		Used By	Usage
	Freq	Tone	Freq	Tone		
Milton PD	460.3500	D205N	465.3500	D205N	LAW	Cabell Co
UHF Direct 1	453.3250	D311	453.3250	D311	ALL	Logan Co
UHF Direct 2	453.7750	D311	453.7750	D311	ALL	Logan Co
EMS BEND	453.8750	054	458.8750	054	EMS	Mason Co
EMS NORTH	453.8750	432	458.8750	432	EMS	Mason Co
LAW NORTH	453.2000	432	458.2000	432	LAW	Mason Co
LAW WEST	453.2000	054	453.2000	054	LAW	Mason Co
LAW SOUTH	453.2000	731	458.2000	731	LAW	Mason Co
EMS EAST	460.2500	731	465.2500	731	EMS	Mason Co
EMS VALLEY	460.2500	432	465.2500	432	EMS	Mason Co
Mason Fire	460.3250	054	465.3250	054	Fire	Mason Co
Point Pleasant VFD	453.6375	703 DPL	458.6375	703 DPL	Fire	Point Pleasant

Unless otherwise indicated, all channels are Analog Digital Mixed

Marshall Co channels are Digital

Unless otherwise indicated, all channels are Narrowband Wideband

STATEWIDE CHANNEL PLAN – UHF BAND

STATEWIDE CHANNEL PLAN – UHF BAND

Channel Name	Mob RX/Base TX		Mob TX/Base RX		Used By	Usage
	Freq	Tone	Freq	Tone		
UCALL40	453.2125	CSQ	458.2125	156.7	Public Safety	See NIFOG for Rules of Use
UCALL40D	453.2125	CSQ	453.2125	156.7	Public Safety	
UTAC41	453.4625	CSQ	458.4625	156.7	Public Safety	
UTAC41D	453.4625	CSQ	453.4625	156.7	Public Safety	



STATEWIDE CHANNEL PLAN – UHF BAND

Channel Name	Mob RX/Base TX		Mob TX/Base RX		Used By	Usage
	Freq	Tone	Freq	Tone		
UTAC42	453.7125	CSQ	458.7125	156.7	Public Safety	
UTAC42D	453.7125	CSQ	453.7125	156.7	Public Safety	
UTAC43	453.8625	CSQ	458.8625	156.7	Public Safety	
UTAC43D	453.8625	CSQ	453.8625	156.7	Public Safety	

Unless otherwise indicated, all channels are Analog Digital Mixed
 Unless otherwise indicated, all channels are Narrowband Wideband

INTEROPERABILITY/SHARED TALKGROUPS 700 MHz BAND

Interoperability/Shared Talkgroups			
Name	TG ID	Trunked System	Primary Use
SIRN			
DEP 1		SIRN	(SIRN Assigned)
DEP TAC		SIRN	Specific Events (SIRN Assigned)

Unless otherwise indicated, all channels are Analog Digital Mixed
 Unless otherwise indicated, all channels are Narrowband Wideband

INTEROPERABILITY/SHARED CHANNELS – 700 MHz BAND

Interoperability/Shared Talkgroups			
Name	TG ID	Trunked System	Primary Use



Interoperability/Shared Talkgroups

Name	TG ID	Trunked System	Primary Use

INTEROPERABILITY/SHARED TALKGROUPS 800 MHz BAND

Interoperability/Shared Talkgroups 800 MHz Band

Name	TG ID	Trunked System	Primary Use
Region II			
Disaster		Wheeling 800 MHz	
Special City		Wheeling 800 MHz	
Region III			
Disaster 1		Jefferson Co 800 MHz	Disaster Ops
Disaster 2		Jefferson Co 800 MHz	Disaster Ops
Disaster 3		Jefferson Co 800 MHz	Disaster Ops

INTEROPERABILITY/SHARED CHANNELS – 800 MHz BAND

INTEROPERABILITY/SHARED CHANNELS – 800 MHz BAND

Channel Name	Mob RX/Base TX		Mob TX/Base RX		Used By	Usage
	Freq	Tone	Freq	Tone		

Unless otherwise indicated, all channels are Analog Digital Mixed

Unless otherwise indicated, all channels are Narrowband Wideband

STATEWIDE CHANNEL PLAN – 800 MHz BAND

STATEWIDE CHANNEL PLAN – 800 MHz BAND

Channel Name	Mob RX/Base TX		Mob TX/Base RX		Used By	Usage
	Freq	Tone	Freq	Tone		
8CALL90	851.0125	CSQ	806.0125	156.7	Public Safety	See NIFOG for Rules of Use



STATEWIDE CHANNEL PLAN – 800 MHz BAND

Channel Name	Mob RX/Base TX		Mob TX/Base RX		Used By	Usage
	Freq	Tone	Freq	Tone		
8CALL90D	851.0125	CSQ	851.0125	156.7	Public Safety	
8TAC91	851.5125	CSQ	806.5125	156.7	Public Safety	
8TAC91D	851.5125	CSQ	851.5125	156.7	Public Safety	
8TAC92	852.0125	CSQ	807.0125	156.7	Public Safety	
8TAC92D	852.0125	CSQ	852.0125	156.7	Public Safety	
8TAC93	852.5125	CSQ	807.5125	156.7	Public Safety	
8TAC93D	852.5125	CSQ	852.5125	156.7	Public Safety	
8TAC94	853.0125	CSQ	808.0125	156.7	Public Safety	
8TAC94D	853.0125	CSQ	853.0125	156.7	Public Safety	
Unless otherwise indicated, all channels are <input checked="" type="checkbox"/> Analog <input type="checkbox"/> Digital <input type="checkbox"/> Mixed Unless otherwise indicated, all channels are <input type="checkbox"/> Narrowband <input checked="" type="checkbox"/> Wideband						



Nationwide Interoperability Channels

NATIONAL INTEROPERABILITY CHANNELS – VHF LOW BAND

Channel Name	Mob RX/Base TX		Mob TX/Base RX		Used By	Usage
	Freq	Tone	Freq	Tone		
LLAW1	39.460	156.7	45.860	156.7	Law	Interop
LLAW1D	39.460	156.7	39.460	156.7	Law	Interop
LFIRE2	39.480	156.7	45.880	156.7	Fire	Interop
LFIRE2D	39.480	156.7	39.480	156.7	Fire	Interop
LLAW3	45.860	156.7	39.460	156.7	Law	Interop
LLAW3D	45.860	156.7	45.860	156.7	Law	Interop
LFIRE4	45.880	156.7	39.480	156.7	Fire	Interop
LFIRE4D	45.880	156.7	45.880	156.7	Fire	Interop

- *Mobile/portable use under blanket authorization by the FCC, Base station channel use requires an FCC license.*
- *All channels are wideband, analog, conventional*

NATIONAL INTEROPERABILITY CHANNELS – VHF HIGH BAND

Channel Name	Mob RX/Base TX		Mob TX/Base RX		Used By	Usage
	Freq	Tone	Freq	Tone		
VCALL10	155.7525	156.7	155.7525	156.7	Any	Calling
VTAC11	151.1375	156.7	151.1375	156.7	Any	Incident Coord
VTAC12	154.4525	156.7	154.4525	156.7	Any	Incident Coord
VTAC13	158.7375	156.7	158.7375	156.7	Any	Incident Coord
VTAC14	159.4725	156.7	159.4725	156.7	Any	Incident Coord
VTAC33	159.4725	156.7	151.1375	136.5	Any	Rptr. (VTAC 14/11)
VTAC34	158.7375	156.7	154.4525	136.5	Any	Rptr. (VTAC 13/12)
VTAC35	159.4725	156.7	158.7375	136.5	Any	Rptr. (VTAC 14/13)
VTAC36	151.1375	156.7	159.4725	136.5	Any	Rptr. (VTAC 11/14)
VTAC37	154.4525	156.7	158.7375	136.5	Any	Rptr. (VTAC 12/13)
VTAC38	158.7375	156.7	159.4725	136.5	Any	Rptr. (VTAC 13/14)



NATIONAL MUTUAL AID AND COMMON CHANNELS – VHF HIGH BAND

Channel Name	Mob RX/Base TX		Mob TX/Base RX		Used By	Usage
	Freq	Tone	Freq	Tone		
VFIRE21	154.2800	156.7	154.2800	156.7	Fire	Mutual Aid
VFIRE22	154.2650	156.7	154.2650	156.7	Fire	Mutual Aid
VFIRE23	154.2950	156.7	154.2950	156.7	Fire	Mutual Aid
VFIRE24	154.2725	156.7	154.2725	156.7	Fire	Mutual Aid
VFIRE25	154.2875	156.7	154.2875	156.7	Fire	Mutual Aid
VFIRE26	154.3025	156.7	154.3025	156.7	Fire	Mutual Aid
VMED28	155.3400	156.7	155.3400	156.7	EMS	Mutual Aid
VMED29	155.3475	156.7	155.3475	156.7	EMS	Mutual Aid
VLAW31	155.4750	156.7	155.4750	156.7	Law	Inter-agency
VLAW32	155.4825	156.7	155.4825	156.7	Law	Inter-agency
VSAR16	155.1600	127.3	155.1600	127.3	Any	Search and Rescue

- All channel use requires an FCC license.
- Local use may specify other tone codes.
- All channels are narrowband, analog, conventional

NATIONAL INTEROPERABILITY CHANNELS – UHF BAND

Channel Name	Mob RX/Base TX		Mob TX/Base RX		Used By	Usage
	Freq	Tone	Freq	Tone		
UCALL40	453.2125	156.7	458.2125	156.7	Any	Calling
UCALL40D	453.2125	156.7	453.2125	156.7	Any	Calling
UTAC41	453.4625	156.7	458.4625	156.7	Any	Incident Coord
UTAC41D	453.4625	156.7	453.4625	156.7	Any	Incident Coord
UTAC42	453.7125	156.7	458.7125	156.7	Any	Incident Coord
UTAC42D	453.7125	156.7	453.7125	156.7	Any	Incident Coord
UTAC43	453.8625	156.7	458.8625	156.7	Any	Incident Coord
UTAC43D	453.8625	156.7	453.8625	156.7	Any	Incident Coord

- Mobile/portable use under blanket authorization by the FCC, Base station channel use requires an FCC license.
- All channels are narrow, analog, conventional



NATIONAL UHF MED CHANNELS						
Channel Name	Mob RX/Base TX		Mob TX/Base RX		Bandwidth (KHz)	Usage
	Freq	Tone	Freq	Tone		
MED-1	463.000	Varies	468.000	Varies	12.5 or 6.25	Coord/Control
MED-11	463.00625	Varies	468.00625	Varies	6.25	Coord/Control
MED-12	463.0125	Varies	468.0125	Varies	12.5 or 6.25	Coord/Control
MED-13	463.01875	Varies	468.01875	Varies	6.25	Coord/Control
MED-2	463.025	Varies	468.025	Varies	12.5 or 6.25	Coord/Control
MED-21	463.03125	Varies	468.03125	Varies	6.25	Coord/Control
MED-22	463.0375	Varies	468.0375	Varies	12.5 or 6.25	Coord/Control
MED-23	463.04375	Varies	468.04375	Varies	6.25	Coord/Control
MED-3	463.050	Varies	468.050	Varies	12.5 or 6.25	Coord/Control
MED-31	463.05625	Varies	468.05625	Varies	6.25	Coord/Control
MED-32	463.0625	Varies	468.0625	Varies	12.5 or 6.25	Coord/Control
MED-33	463.06875	Varies	468.06875	Varies	6.25	Coord/Control
MED-4	463.075	Varies	468.075	Varies	12.5 or 6.25	Coord/Control
MED-41	463.08125	Varies	468.08125	Varies	6.25	Coord/Control
MED-42	463.0875	Varies	468.0875	Varies	12.5 or 6.25	Coord/Control
MED-43	463.09375	Varies	468.09375	Varies	6.25	Coord/Control
MED-5	463.100	Varies	468.100	Varies	12.5 or 6.25	Coord/Control
MED-51	463.10625	Varies	468.10625	Varies	6.25	Coord/Control
MED-52	463.1125	Varies	468.1125	Varies	12.5 or 6.25	Coord/Control
MED-53	463.11875	Varies	468.11875	Varies	6.25	Coord/Control
MED-6	463.125	Varies	468.125	Varies	12.5 or 6.25	Coord/Control
MED-61	463.13125	Varies	468.13125	Varies	6.25	Coord/Control
MED-62	463.1375	Varies	468.1375	Varies	12.5 or 6.25	Coord/Control
MED-63	463.14375	Varies	468.14375	Varies	6.25	Coord/Control
MED-7	463.150	Varies	468.150	Varies	12.5 or 6.25	Coord/Control
MED-71	463.15625	Varies	468.15625	Varies	6.25	Coord/Control
MED-72	463.1625	Varies	468.1625	Varies	12.5 or 6.25	Coord/Control
MED-73	463.16875	Varies	468.16875	Varies	6.25	Coord/Control



NATIONAL UHF MED CHANNELS

Channel Name	Mob RX/Base TX		Mob TX/Base RX		Bandwidth (KHz)	Usage
	Freq	Tone	Freq	Tone		
MED-8	463.175	Varies	468.175	Varies	12.5 or 6.25	Coord/Control
MED-81	463.18125	Varies	468.18125	Varies	6.25	Coord/Control
MED-82	463.1875	Varies	468.1875	Varies	12.5 or 6.25	Coord/Control
MED-83	463.19375	Varies	468.19375	Varies	6.25	Coord/Control
MED-9 *	462.950	Varies	467.950	Varies	12.5 or 6.25	Dispatch
MED-91 *	462.95625	Varies	467.95625	Varies	6.25	Dispatch
MED-92 *	462.9625	Varies	467.9625	Varies	12.5 or 6.25	Dispatch
MED-93 *	462.96875	Varies	467.96875	Varies	6.25	Dispatch
MED-10 *	462.975	Varies	467.975	Varies	12.5 or 6.25	Dispatch
MED-101 *	462.98125	Varies	467.98125	Varies	6.25	Dispatch
MED-102 *	462.9875	Varies	467.9875	Varies	12.5 or 6.25	Dispatch
MED-103 *	462.99375	Varies	467.99375	Varies	6.25	Dispatch

▪ Channels use requires an FCC license

▪ Tone squelch are set by local use

*- Denotes primary use for dispatch

NATIONAL INTEROPERABILITY CHANNELS – 700 MHz BAND

Channel Name	Mob RX/Base TX		Mob TX/Base RX		Used By	Usage
	Freq	Tone	Freq	Tone		
7CALL50	769.24375	\$F7E	799.24375	\$293	Any	Calling
7CALL50D	769.24375	\$F7E	769.24375	\$293	Any	Calling
7TAC51	769.14375	\$F7E	799.14375	\$293	Any	Inter-Agency
7TAC51D	769.14375	\$F7E	769.14375	\$293	Any	Inter-Agency
7TAC52	769.64375	\$F7E	799.64375	\$293	Any	Inter-Agency
7TAC52D	769.64375	\$F7E	769.64375	\$293	Any	Inter-Agency
7TAC53	770.14375	\$F7E	800.14375	\$293	Any	Inter-Agency
7TAC53D	770.14375	\$F7E	770.14375	\$293	Any	Inter-Agency
7TAC54	770.64375	\$F7E	800.64375	\$293	Any	Inter-Agency
7TAC54D	770.64375	\$F7E	770.64375	\$293	Any	Inter-Agency



NATIONAL INTEROPERABILITY CHANNELS – 700 MHz BAND

Channel Name	Mob RX/Base TX		Mob TX/Base RX		Used By	Usage
	Freq	Tone	Freq	Tone		
7TAC55	769.74375	\$F7E	799.74375	\$293	Any	Inter-Agency
7TAC55D	769.74375	\$F7E	769.74375	\$293	Any	Inter-Agency
7TAC56	770.24375	\$F7E	800.24375	\$293	Any	Inter-Agency
7TAC56D	770.24375	\$F7E	770.24375	\$293	Any	Inter-Agency
7GTAC57	770.99375	\$F7E	800.99375	\$293	Any	Inter-Agency
7GTAC57D	770.99375	\$F7E	770.99375	\$293	Any	Inter-Agency
7MOB59	770.89375	\$F7E	800.89375	\$293	Any	Mobile Repeater
7MOB59D	770.89375	\$F7E	770.89375	\$293	Any	Mobile Repeater
7LAW61	770.39375	\$F7E	800.39375	\$293	Law	Inter-Agency
7LAW61D	770.39375	\$F7E	770.39375	\$293	Law	Inter-Agency
7LAW62	770.49375	\$F7E	800.49375	\$293	Law	Inter-Agency
7LAW62D	770.49375	\$F7E	770.49375	\$293	Law	Inter-Agency
7FIRE63	769.89375	\$F7E	799.89375	\$293	Fire	Inter-Agency
7FIRE63D	769.89375	\$F7E	769.89375	\$293	Fire	Inter-Agency
7FIRE64	769.99375	\$F7E	799.99375	\$293	Fire	Inter-Agency
7FIRE64D	769.99375	\$F7E	769.99375	\$293	Fire	Inter-Agency
7MED65	769.39375	\$F7E	799.39375	\$293	EMS	Inter-Agency
7MED65D	769.39375	\$F7E	769.39375	\$293	EMS	Inter-Agency
7MED66	769.49375	\$F7E	799.49375	\$293	EMS	Inter-Agency
7MED66D	769.49375	\$F7E	769.49375	\$293	EMS	Inter-Agency
7DATA69	770.74375	\$F7E	800.74375	\$293	Any	Mobile Data
7DATA69D	770.74375	\$F7E	770.74375	\$293	Any	Mobile Data
7CALL70	773.25625	\$F7E	803.25625	\$293	Any	Calling
7CALL70D	773.25625	\$F7E	773.25625	\$293	Any	Calling
7TAC71	773.10625	\$F7E	803.10625	\$293	Any	Inter-Agency
7TAC71D	773.10625	\$F7E	773.10625	\$293	Any	Inter-Agency
7TAC72	773.60625	\$F7E	803.60625	\$293	Any	Inter-Agency
7TAC72D	773.60625	\$F7E	773.60625	\$293	Any	Inter-Agency
7TAC73	774.10625	\$F7E	804.10625	\$293	Any	Inter-Agency



NATIONAL INTEROPERABILITY CHANNELS – 700 MHz BAND

Channel Name	Mob RX/Base TX		Mob TX/Base RX		Used By	Usage
	Freq	Tone	Freq	Tone		
7TAC73D	774.10625	\$F7E	774.10625	\$293	Any	Inter-Agency
7TAC74	774.60625	\$F7E	804.60625	\$293	Any	Inter-Agency
7TAC74D	774.60625	\$F7E	774.60625	\$293	Any	Inter-Agency
7TAC75	773.75625	\$F7E	803.75625	\$293	Any	Inter-Agency
7TAC75D	773.75625	\$F7E	773.75625	\$293	Any	Inter-Agency
7TAC76	774.25625	\$F7E	804.25625	\$293	Any	Inter-Agency
7TAC76D	774.25625	\$F7E	774.25625	\$293	Any	Inter-Agency
7GTAC77	774.85625	\$F7E	804.85625	\$293	Any	Inter-Agency
7GTAC77D	774.85625	\$F7E	774.85625	\$293	Any	Inter-Agency
7MOB79	774.50625	\$F7E	804.50625	\$293	Any	Mobile Repeater
7MOB79D	774.50625	\$F7E	774.50625	\$293	Any	Mobile Repeater
7LAW81	774.00625	\$F7E	804.00625	\$293	Law	Inter-Agency
7LAW81D	774.00625	\$F7E	774.00625	\$293	Law	Inter-Agency
7LAW82	774.35625	\$F7E	804.35625	\$293	Law	Inter-Agency
7LAW82D	774.35625	\$F7E	774.35625	\$293	Law	Inter-Agency
7FIRE83	773.50625	\$F7E	803.50625	\$293	Fire	Inter-Agency
7FIRE83D	773.50625	\$F7E	773.50625	\$293	Fire	Inter-Agency
7FIRE84	773.85625	\$F7E	803.85625	\$293	Fire	Inter-Agency
7FIRE84D	773.85625	\$F7E	773.85625	\$293	Fire	Inter-Agency
7MED86	773.00625	\$F7E	803.00625	\$293	EMS	Inter-Agency
7MED86D	773.00625	\$F7E	773.00625	\$293	EMS	Inter-Agency
7MED87	773.35625	\$F7E	803.35625	\$293	EMS	Inter-Agency
7MED87D	773.35625	\$F7E	773.35625	\$293	EMS	Inter-Agency
7DATA89	774.75625	\$F7E	804.75625	\$293	Any	Mobile Data
7DATA89D	774.75625	\$F7E	774.75625	\$293	Any	Mobile Data

- *Mobile/portable use under blanket authorization by the FCC, Base station channel use requires an FCC license.*
- *Digital P-25, Phase I Conventional*



NATIONAL AIR-GROUND CHANNELS – 700 MHz BAND

Channel Name	Mob RX/Base TX		Mob TX/Base RX		Used By	Usage
	Freq	Tone	Freq	Tone		
7AG58	769.13125	\$F7E	799.13125	\$293	A/G	Coordination
7AG58D	769.13125	\$F7E	769.13125	\$293	A/G	Coordination
7AG60	769.63125	\$F7E	799.63125	\$293	A/G	Coordination
7AG60D	769.63125	\$F7E	769.63125	\$293	A/G	Coordination
7AG67	770.13125	\$F7E	800.13125	\$293	A/G	Coordination
7AG67D	770.13125	\$F7E	770.13125	\$293	A/G	Coordination
7AG68	770.63125	\$F7E	800.63125	\$293	A/G	Coordination
7AG68D	770.63125	\$F7E	770.63125	\$293	A/G	Coordination
7AG78	773.11875	\$F7E	803.11875	\$293	A/G	Coordination
7AG78D	773.11875	\$F7E	773.11875	\$293	A/G	Coordination
7AG80	773.61875	\$F7E	803.61875	\$293	A/G	Coordination
7AG80D	773.61875	\$F7E	773.61875	\$293	A/G	Coordination
7AG85	774.11875	\$F7E	804.11875	\$293	A/G	Coordination
7AG85D	774.11875	\$F7E	774.11875	\$293	A/G	Coordination
7AG88	774.61875	\$F7E	804.61875	\$293	A/G	Coordination
7AG88D	774.61875	\$F7E	774.61875	\$293	A/G Any	Landing Zone

- *Mobile/portable use under blanket authorization by the FCC, Base station channel use requires an FCC license.*
- *Digital P-25, Phase I Conventional*
- *Airborne use is limited to aircraft at or below 1,500 ft. above ground level (AGL).*
- *Aircraft are limited to 2 watts effective radiated power (ERP) while airborne.*
- *Aircraft may transmit on either side of the channel pair.*

NATIONAL INTEROPERABILITY CHANNELS – 800 MHz BAND

Channel Name	Mob RX/Base TX		Mob TX/Base RX		Used By	Usage
	Freq	Tone	Freq	Tone		
8CALL90	851.0125	156.7	806.0125	156.7	A/G	Coordination
8CALL90D	851.0125	156.7	851.0125	156.7	A/G	Coordination



NATIONAL INTEROPERABILITY CHANNELS – 800 MHz BAND

Channel Name	Mob RX/Base TX		Mob TX/Base RX		Used By	Usage
	Freq	Tone	Freq	Tone		
8TAC91	851.5125	156.7	806.5125	156.7	A/G	Coordination
8TAC91D	851.5125	156.7	851.5125	156.7	A/G	Coordination
8TAC92	852.0125	156.7	807.0125	156.7	A/G	Coordination
8TAC92D	852.0125	156.7	852.0125	156.7	A/G	Coordination
8TAC93	852.5125	156.7	807.5125	156.7	A/G	Coordination
8TAC93D	852.5125	156.7	852.5125	156.7	A/G	Coordination
8TAC94	853.0125	156.7	808.0125	156.7	A/G	Coordination
8TAC94D	853.0125	156.7	853.0125	156.7	A/G	Coordination
7AG80	773.61875	\$F7E	803.61875	\$293	A/G	Coordination
7AG80D	773.61875	\$F7E	773.61875	\$293	A/G	Coordination
7AG85	774.11875	\$F7E	804.11875	\$293	A/G	Coordination
7AG85D	774.11875	\$F7E	774.11875	\$293	A/G	Coordination
7AG88	774.61875	\$F7E	804.61875	\$293	A/G	Coordination
7AG88D	774.61875	\$F7E	774.61875	\$293	A/G Any	Landing Zone

- *Mobile/portable use under blanket authorization by the FCC, Base station channel use requires an FCC license.*
- *NPSPAC 800 MHz channels are wideband with 4 KHz. deviation.*

FEDERAL INCIDENT RESPONSE CHANNELS

FEDERAL VHF INCIDENT RESPONSE CHANNELS

Channel Name	Mob RX/Base TX		Mob TX/Base RX		Used By	Usage
	Freq	Tone	Freq	Tone		
NC 1	169.5375	CSQ	164.7125	167.9	A/G	Calling
IR 1	170.0125	CSQ	165.2500	167.9	A/G	
IR 2	170.4125	CSQ	165.9625	167.9	A/G	
IR 3	170.6875	CSQ	166.5750	167.9	A/G	
IR 4	173.0375	CSQ	167.3250	167.9	A/G	
IR 5	169.5375	CSQ	169.5375	167.9	A/G	Direct for NC 1
IR 6	170.0125	CSQ	170.0125	167.9	A/G	Direct for IR 1



FEDERAL VHF INCIDENT RESPONSE CHANNELS

Channel Name	Mob RX/Base TX		Mob TX/Base RX		Used By	Usage
	Freq	Tone	Freq	Tone		
IR 7	170.4125	CSQ	170.4125	167.9	A/G	Direct for IR 2
IR 8	170.6875	CSQ	170.6875	167.9	A/G	Direct for IR 3
IR 9	173.0375	CSQ	173.0375	167.9	A/G	Direct for IR 4

Default operations should be carrier squelch on receive, CTCSS 167.9 transmit. If the user can enable/disable without reprogramming the radio, the indicated CTCSS tone should also be programmed for receive, and the user instructed how and when to enable/disable.

FEDERAL UHF INCIDENT RESPONSE CHANNELS

Channel Name	Mob RX/Base TX		Mob TX/Base RX		Used By	Usage
	Freq	Tone	Freq	Tone		
NC 2	410.2375	CSQ	419.2375	167.9	Calling	Analog
IR 10	410.4375	CSQ	419.4375	167.9	Tactical	Analog
IR 11	410.6375	CSQ	419.6375	167.9	Tactical	
IR 12	410.8375	CSQ	419.8375	167.9	Tactical	
IR 13	413.1875	CSQ	413.1875	167.9	Tactical	
IR 14	413.2125	CSQ	413.2125	167.9	Tactical	
IR 15	410.2375	CSQ	410.2375	167.9	Tactical	Direct for LE 2
IR 16	410.4375	CSQ	410.4375	167.9	Tactical	Direct for LE 3
IR 17	410.6375	CSQ	410.6375	167.9	Tactical	Direct for LE 4
IR 18	410.8375	CSQ	410.8375	167.9	Tactical	Direct for LE 5

Default operations should be carrier squelch on receive, CTCSS 167.9 transmit. If the user can enable/disable without reprogramming the radio, the indicated CTCSS tone should also be programmed for receive, and the user instructed how and when to enable/disable.



FEDERAL VHF LAW ENFORCEMENT CHANNELS

Channel Name	Mob RX/Base TX		Mob TX/Base RX		Used By	Usage
	Freq	Tone	Freq	Tone		
LE A ¹	167.0875	CSQ	167.0875	167.9	A/G	Analog
LE 1 ¹	167.0875	CSQ	162.0875	167.9	A/G	Analog
LE 2	167.2500	\$68F	162.2625	\$68F	A/G	
LE 3	167.7500	\$68F	162.8375	\$68F	A/G	
LE 4	168.1125	\$68F	163.2875	\$68F	A/G	
LE 5	168.4625	\$68F	163.4250	\$68F	A/G	
LE 6	167.2500	\$68F	167.2500	\$68F	A/G	Direct for NC 2
LE 7	167.7500	\$68F	167.7500	\$68F	Tactical	Direct for IR 10
LE 8	168.1125	\$68F	168.1125	\$68F	Tactical	Direct for IR 11
LE 9	168.4625	\$68F	168.4625	\$68F	Tactical	Direct for IR 12

¹ LE A and LE 1 are analog, with CTCSS 167.9 Tx and CSQ Rx. All other LE channels are digital with NAC \$68F.

FEDERAL UHF LAW ENFORCEMENT CHANNELS

Channel Name	Mob RX/Base TX		Mob TX/Base RX		Used By	Usage
	Freq	Tone	Freq	Tone		
LE B ¹	414.0375	CSQ	414.0375	167.9	Calling	Analog
LE 10 ¹	409.9875	CSQ	418.9875	167.9	Tactical	Analog
LE 11	410.1875	\$68F	419.1875	\$68F	Tactical	
LE 12	410.6125	\$68F	419.6125	\$68F	Tactical	
LE 13	414.0625	\$68F	414.0625	\$68F	Tactical	
LE 14	414.3125	\$68F	414.3125	\$68F	Tactical	
LE 15	414.3375	\$68F	414.3375	\$68F	Tactical	
LE 16 ¹	409.9875	CSQ	409.9875	167.9	Tactical	Direct for LE 10
LE 17	410.1875	\$68F	410.1875	\$68F	Tactical	Direct for LE 11
LE 18	410.6125	\$68F	410.6125	\$68F	Tactical	Direct for LE 12

¹ LE B, LE 10, and LE 16 are analog, with CTCSS 167.9 Tx and CSQ Rx. All other LE channels are digital with NAC \$68F.



FEDERAL INTEROPERABILITY CHANNELS FOR SEARCH AND RESCUE

FEDERAL/NON-FEDERAL SEARCH AND RESCUE COMMAND						
Channel Name	Mob RX/Base TX		Mob TX/Base RX		Used By	Usage
	Freq	Tone	Freq	Tone		
IR 12	410.8375	CSQ	419.8375	167.9	Calling	
VTAC14	159.4725	156.7	159.4725	156.7	Tactical	
UTAC43	453.8625	156.7	458.8625	156.7	Tactical	
8TAC94	853.0125	156.7	808.0125	156.7	Tactical	
Marine Chan. 17	156.8500	CSQ	156.8500	CSQ	Tactical	Requires FCC Special Temporary Authority

¹ – NPSPAC 800 MHz channels are wideband with 4 KHz. deviation instead of 5 KHz.

FEDERAL/NON FEDERAL SEARCH AND RESCUE OPERATIONS						
Channel Name	Mob RX/Base TX		Mob TX/Base RX		Used By	Usage
	Freq	Tone	Freq	Tone		
Ground Operations			155.1600 narrowband FM			
Maritime Operations ¹			VHF Marine ch.21A or 23A as specified by U.S. Coast Guard Sector Commander			
Air Operations – Civilian			123.1000 MHz AM			
Air Operations – USCG/Military			345.0 MHz AM for initial contact only, then move to 282.8 MHz AM or another working channel			



FEDERAL/NON FEDERAL SEARCH AND RESCUE OPERATIONS

Channel Name	Mob RX/Base TX Freq	Mob TX/Base RX Tone	Mob TX/Base RX Freq	Mob TX/Base RX Tone	Used By	Usage
Air Rescue Assets to Air Rescue Assets (deconfliction)						As chartered on standard air chart or MULTICOM 122.850 (south or west sector) & 122.900 MHz (north or east sector), or as specified by the Federal Aviation Administration (FAA). 122.850 may not be used for testing or exercise.
Ground to Air SAR Working Channel ²			Marine Chan. 83A			Marine Channels 21A, 23A, 81A and 83A alternates are as specified by the local USCG Sector Commander
Ground to Maritime SAR Working Channel ²			Marine Chan. 21A			
Maritime/Air/Ground SAR Working Channel ²			Marine Chan. 83A			
EMS/Medical Support			155.3400 (narrowband FM)			
Hailing ¹ & DISTRESS only – Maritime/Air/Ground			Marine channel 16			
¹ Use VHF Marine channel 16 to make contact (30 seconds max), then move to the appropriate working channel as directed by the local USCG Sector Commander. Non-maritime use of any VHF Maritime channel requires FCC Special Temporary Authority or appropriate license. VHF marine channels use wideband FM. Emission 16K00F3E.						
² Direction from USCG, FCC, or FAA overrides information in this table. This table does not convey authority to operate.						



VHF MARINE CHANNELS			
Channel	Frequency	Tone	Usage
16	156.8000	CSQ	International Distress, Safety and Calling
17	156.8500	CSQ	State & local govt maritime control
21A	157.0500	CSQ	U.S. Coast Guard assigned
23A	127.1500	CSQ	U.S. Coast Guard assigned
81A	157.0750	CSQ	Environmental protection operations or as assigned
83A	157.1750	CSQ	U.S. Coast Guard assigned



Communications Resources

INTEROPERABILITY BASE STATIONS AND FIXED REPEATERS

Table 1: Interoperability Base Stations and Fixed Repeaters

INTEROPERABILITY BASE STATIONS and FIXED REPEATERS				
County	Managing Agency	24/7 Phone	Location	Channels
State Agencies				
Region I				
Jackson	Jackson County Commission	304-373-2278	Ripley	SIRN
Jackson	Jackson County Commission	304-373-2278	Sandyville	SIRN
Region II				
No interoperability base stations or fixed repeaters identified in Region II				
Region III				
Morgan	Morgan County ECC/E-911	304-258-0305	Berkeley Springs	VTAC1 N
Morgan	Morgan County ECC/E-911	304-258-0305	Berkeley Springs	VLAW 1 E
Morgan	Morgan County ECC/E-911	304-258-0305	Martinsburg North Mt (1)	VTAC 1 E
Morgan	Morgan County ECC/E-911	304-258-0305	Martinsburg North Mt (1)	VLAW 1 E
Morgan	Morgan County ECC/E-911	304-258-0305	Purslane-Gambel Lane	VTAC1 W
Morgan	Morgan County ECC/E-911	304-258-0305	Purslane-Gambel Lane	VLAW1 W
Morgan	Morgan County ECC/E-911	304-258-0305	Cacapon Mt (State Park)	VTAC1 S


INTEROPERABILITY BASE STATIONS and FIXED REPEATERS

County	Managing Agency	24/7 Phone	Location	Channels
Morgan	Morgan County ECC/E-911	304-258-0305	Cacapon Mt (State Park)	VLAW1 S
Morgan	Morgan County ECC/E-911	304-258-0305	Cacapon Mt (State Park)	VTAC2 S
Morgan	Morgan County ECC/E-911	304-258-0305	Cacapon Mt (State Park)	VTAC3 S
Region IV				
No interoperability base stations or fixed repeaters identified in Region IV				
Region V				
Mercer	Mercer Co Communication Authority	304-425-8911		SIRN
Raleigh	Raleigh Co Emergency Services	304-255-0911		SIRN
Region VI				
Logan	Logan County 911	304-752-7662	Ward Rock	Fire, Law, EMS
Logan	Logan County 911	304-752-7662	Man	Fire, Law, EMS
Logan	Logan County 911	304-752-7662	Crawley Dip/Park	Fire, Law, EMS
Logan	Logan County 911	304-752-7662	Horsepen	Fire
Logan	Logan County 911	304-752-7662	Sharples	Fire, EMS



TRANSPORTABLE GATEWAYS

TRANSPORTABLE GATEWAYS						
Agency	24/7 Phone	Location	Make Model	Cables Radios	Nets	Ports
State Agencies						
HSEM	304-558-5380	Charleston, WV	ACU M	No Yes	4	4
HSEM	304-558-5380	Charleston, WV	ACU1000		8	12
HSEM	304-558-5380	Charleston, WV	RDPR (10)		1	2
State Police		Clarksburg, WV	Raytheon ACU1000		2	4
State Police		Clarksburg, WV	Raytheon ACU1000		2	4
Region I						
Jackson Co Commission	304-372-2000	Ripley, WV	Raytheon ACU1000	No Yes	7	5+
Metro 911 /Kanawha EM	304-357-0191	Charleston, WV	ACU 2000	No Yes	9	10
Metro 911 /Kanawha EM	304-357-0191	Charleston, WV	ACU 4M	No Yes	9	10
Metro 911 /Kanawha EM	304-357-0191	Charleston, WV	Raytheon ACU5000	No Yes	7	12
Wood Co	304-481-3240	Parkersburg WV	ACU2000	No Yes	7	8
Region II						
Brooke Co Sheriff's Dept.	304-527-1430	Wellsburg, WV			4	8
Harrison 911 HQ	304-641-7705	Nutter Fort, WV	Raytheon ACU-M	Yes No	2	4
Harrison 911 PK	304-641-7705	Nutter Fort, WV	Raytheon ACU-m		8	16
Marshall Co Sheriff's Dept.	304-281-4433	Moundsville, WV	CAT OEEY2	Yes No	2	7



TRANSPORTABLE GATEWAYS						
Agency	24/7 Phone	Location	Make Model	Cables Radios	Nets	Ports
Wheeling Fire Dept.	304-234-3711	Wheeling, WV	ICRI OEEYC2		1	4
Wheeling-Ohio EMA	304-234-3695	Wheeling, WV	Raytheon ACU-M		4	8
Region III						
Hampshire Co HSEM	304-822-7513	Romney, WV	Raytheon ACU1000		6	12
Jefferson Co ECC	304-725-8484	Kearneysville, WV	Raytheon ACU-M	Yes No	4	6
Region IV						
Barbour Co	304-457-5167	Philippi, WV	ICRI 4TG		6	6
Lewis Co OEM	304-269-8241	Weston, WV	ICRI 4TG		5	11
Randolph Co OEM	304-636-2057	Elkins, WV	ACU 1000		6	6
Tucker Co OEM	304-478-2866	Parsons, WV	ACU 1000			
Tucker Co OEM	304-478-2866	Parsons, WV	ACU 1000			
Upshur Co OEM	304-472-9550	Buckhannon, WV	ACU 1000		4	4
Upshur Co OEM	304-472-9550	Buckhannon, WV	ACU M		4	4
Upshur Co OEM	304-472-9550	Buckhannon, WV	ICRI AT 6		6	6
WCOES	304-847-7171	Webster Springs, WV	ICRI			
Region V						
None Identified in Region V						
Region VI						

**TRANSPORTABLE GATEWAYS**

Agency	24/7 Phone	Location	Make Model	Cables Radios	Nets	Ports
Mason Co 911	304-675-9911	Point Pleasant, WV	Zetron	Yes No	4	8



TRANSPORTABLE INTEROPERABILITY REPEATERS

TRANSPORTABLE INTEROPERABILITY REPEATERS				
Managing Agency	24/7	Location	Band	Channels
State Agencies				
DHSEM (10)	304-558-5380	Charleston, WV	Any	Various
DHSEM (2)	304-558-5380	Charleston, WV	UHF	Various
DHSEM	304-558-5380	Charleston, WV	UHF	SIRN
DHSEM	304-558-5380	Charleston, WV	VHF/UHF	NIFOG VHF NIFOG UHF
Region I				
Jackson Co Commission	304-372-2000	Ripley, WV	VHF/UHF	NIFOG VHF
Kanawha Co OES – Metro	304-357-0191	Charleston, WV	UHF	UTAC
Wood Co Commission	304-481-3240	Parkersburg, WV	VHF	VTAC34
Region II				
Preston County 911	304-329-1026	Kingwood, WV	VHF	TRLR RPTR
Preston County 911	304-329-1026	Kingwood, WV	VHF	TRLR RPTR
Harrison CO EMS	304-672-3011	Clarksburg, WV	UHF	HAR OPS 1 HAR OPS 2 HAR OPS 3 HAR OPS 4 UCALL/TACS HAR OPS 1 D1G HAR OPS 2 DIG HAR OPS 3 DIG HAR OPS 4 DIG



TRANSPORTABLE INTEROPERABILITY REPEATERS				
Managing Agency	24/7	Location	Band	Channels
Harrison CO EMS	304-672-3011	Clarksburg, WV	UHF	HAR OPS 1 HAR OPS 2 HAR OPS 3 HAR OPS 4 UCALL/TACS HAR OPS 1 D1G HAR OPS 2 DIG HAR OPS 3 DIG HAR OPS 4 DIG
Bridgeport OEM	304-842-8260	Bridgeport, WV	UHF	
Bridgeport OEM 2	304-842-8260	Bridgeport, WV	UHF	
Region III				
No Transportable Repeaters identified in Region III				
Region IV				
No Transportable Repeaters identified in Region IV				
Region V				
No Transportable Repeaters identified in Region V				
Region VI				
Cabell Co EMS	304-526-8484	Cabell Co EMS	UHF	UCALL40, UTAC41-43
Mason Co 911	304-675-9911	Mason Co Comm Vehicle	UHF	UCALL40, UTAC41-43 UCALL40D, UTAC41D-43D



RADIO CACHES

RADIO CACHES						
Agency	24/7 Phone	VHF	UHF	700/800 MHz	800 MHz	Multi Band
STATE AGENCIES						
Dept of Agriculture	304-553-1170		1/12			
Dept of Homeland Security and Emergency Management	304-558-5380	1/24 1/36	3/6 1/12			
State Fire Marshall	304-719-5150		1/10			
West Virginia State Police Troop 3	304-256-6700		1/24			
West Virginia State Police Troop 4	304-256-6700		1/24			
West Virginia State Police Troop 6	304-256-6700		1/24			
REGION I						
Jackson County OES	304-372-2000		1/4			
Kanawha County OES Metro	304-357-0191		1/10			
REGION II						
Brooke County Sheriff	304-737-3660	1/12				
Harrison County 911	304-623-6559		1/14			
Harrison County EMS	304-672-3011		1/3			1/2
Marshall County 911	304-845-1920		1/6 1/12			
Marshall County OEM	304-845-1920		1/6			
Marshall County Sheriff	304-845-1920		2/6			
Marshall County OEM	304-845-1920	1/18				
Ohio County Sheriff	304-234-3695		1/6			
Preston County E-911/OEM	304-234-3695	1/20	1/1 1/11 1/3			1/3 VHF - UHF



RADIO CACHES						
Agency	24/7 Phone	VHF	UHF	700/800 MHz	800 MHz	Multi Band
Wetzel County OEM	304-455-6730					1/17 VHF - UHF
Wheeling Fire Department	304-234-3711		1/12			
Wheeling Police Department	304-234-3664				1/15	
Wheeling - Ohio County EMA	304-234-3695	1/10	1/12			
REGION III						
Jefferson County	304-725-8484		2/25			
Mineral County OEM / 911	304-455-6730		1/10			
REGION IV						
Upshur County OEM	304-472-9550	1/25				
REGION V						
Fayette County OEM	304-574-3590	1/7 3/10				
Mercer County 911	304-425-8911		10/6			
Raleigh County OES	304-255-9121		1/50			
REGION VI						
No Radio Caches Identified						



MOBILE RADIO SYSTEMS

MOBILE RADIO SYSTEMS				
Agency	24/7 Phone	Location	Band	Channels
DHSEM	304-558-5380		Multiband	



MOBILE COMMUNICATION UNITS

Table 2: Mobile Communication Vehicles

MOBILE COMMUNICATION UNITS					
Unit ID	Agency 24/7 Phone	Location Stored Deployment Area	Gateway or Cache Equipped	Seating Disp.	Command
State Agencies					
BAT Mobile 1	WVSP 304-592-1101	S. Charleston, WV Statewide		0	Yes
BAT Mobile 2	WVSP 304-592-1101	Morgantown, WV Statewide		0	Yes
Mobile Command 1	WV DHSEM 304-558-5380	Wheeling, WV Statewide	Cache	3	Yes
MEOC Mobile Command	WV DHSEM 304-558-5380	Dunbar, WV Statewide	Cache	4	5
Truck Trailer II	WV DHSEM 304-558-5380	Charleston, WV Statewide	No	0	0
EPICS	WV DHSEM 304-558-5380	Charleston, WV Statewide	Gateway	0	0
Region I					
ICS Command Trailer	Jackson Co Commission 304-372-2000	Ripley, WV Continental U.S.	Cache	0	0
KC-1 MCP	Kanawha Co OES/Metro 304-357-0191	Charleston, WV Kanawha County		5	4
Wood Co MCV	Wood County Commission 304-481-3240	Parkersburg, WV Wood and Wirt Counties or where needed		4	6



MOBILE COMMUNICATION UNITS					
Unit ID	Agency 24/7 Phone	Location Stored Deployment Area	Gateway or Cache Equipped	Seating Disp.	Command
Region II					
C400	Bridgeport Police 304-842-8260	Bridgeport, WV Statewide		4	8
Crime Scene Unit	Brooke Co Sheriff Dept 304-737-3660	Beech Bottom, WV Statewide			
MCU 1	Marion Co DHSEM 304-367-0911	Fairmont, WV Statewide		4	6
OEM Command	Marshal Co OEM 304-843-1130	Moundsville, WV Marshal/Ohio Counties		3	5
Marshal Co MCU 2	Marshal Co Sheriff 304-843-1500	Moundsville, WV Marshal County		1	10
Preston Co MCU 1	Preston Co 304-329-1026	Kingwood, WV Preston, County		2	8
Wetzel Command Unit 804	Wetzel Co OEM 304-455-6730	New Martinsville Statewide	Cache	1	4
Regional Response Team #5	Wheeling FD 304-234-3711	Wheeling, WV Stateside		0	Yes
Command 1	WOCEMA 304-234-3695	Wheeling, WV Statewide		3	Yes



MOBILE COMMUNICATION UNITS					
Unit ID	Agency 24/7 Phone	Location Stored Deployment Area	Gateway or Cache Equipped	Seating Disp.	Command
Region III					
Mineral CO	Mineral CO Sheriff's Off. 304-455-6730	Kyser, WV Mineral, Grant, Hampshire & Hardy Counties		0	0
Region IV					
Braxton Co Trailer/MCU	Braxton Co OES 304-765-3320	Sutton, WV Braxton County		1	8-10
Lewis MCU	Lewis Co OEM 304-269-8241	Weston WV Region IV		2	Yes
Mobile Comm Trailer	Pendleton Co OEM 304-358-3271	Franklin, WV Pendleton County		0	0
Comm Trailer	Upshur Co OEM 304-987-1672	Buckhannon, WV Region IV		1	Yes
Region V					
MCU Camper	Mercer Co 911 304-425-8911	Princeton, WV WV and surrounding areas		4	
Command 1	Raleigh Co 911 304-255-0911	WV Homeland Security Region 5		0	2
Region VI					
EM50	Cabell Co Sheriff Dept 304-526-9797	Barboursville, WV Regional		2	6
MCU 1	Mason Co DHSEM 304-675-9911	Beech Bottom, WV Statewide		4	6

**MOBILE COMMUNICATION UNITS**

Unit ID	Agency 24/7 Phone	Location Stored Deployment Area	Gateway or Cache Equipped	Seating	
				Disp.	Command
Mobile Ops and Comm Resource	Mason Co E-911 304-675-9911	Mason, WV Mason Co and surrounding jurisdictions	Gateway	2	0



OTHER MOBILE EQUIPMENT

OTHER MOBILE EQUIPMENT			
TYPE	24/7 PHONE	OWNING AGENCY	DESCRIPTION
Region II			
Radio Tower Mobile Generator	304-626-4900	Harrison-Taylor 911	60kw single phase
Region V			
Mobile generator	304-425-8911	Mercer Co	20 kw diesel
Generator and Light Plants	304-255-0911	Raleigh Co OES	6 light plants and 6 portable generators
Region VI			
Mobile generator	304-675-9911	Mason Co DHSEM	80 kw diesel



Amateur Radio Emergency Communications

The policies, procedures, and protocols contained within the West Virginia Amateur Radio Emergency Service (ARES) and Radio Amateur Civil Emergency Service (RACES) Auxiliary Communication Tactical Communications Guide, dated June 20, 2019 are incorporated into this Field Operations Guide by reference.

LOCAL AND REGIONAL ARES/RACES VOICE CHANNELS

LOCAL AND REGIONAL ARES/RACES REPEATER VOICE CHANNELS				
CHANNEL NAME	FREQUENCY	OFFSET	PL TONE	COMMENTS
RACES	147.180 MHz	+ 600 kHz	127.3 Hz	RACES VHF
NSRC	147.345 MHz	+600 KHz	107.2	North Shore Radio Club (SKYWARN Liaison)
K9IQP	442.525 MHz	+ 5000 kHz	114.8 Hz	RACES UHF
KD9GY	443.850 MHz	+ 5000 kHz	114.8 Hz	RACES Affiliate

LOCAL AND REGIONAL RACES SIMPLEX VOICE CHANNELS

LOCAL AND REGIONAL ARES/RACES REPEATER VOICE CHANNELS			
Channel Name	Frequency	TX/RX PL	Comments
R-V-TAC-1	146.400 MHz	127.3 Hz	VHF tactical channel
R-V-TAC-2	146.535 MHz	127.3 Hz	VHF tactical channel
R-2-TAC-2	223.560 MHz	127.3 Hz	220 tactical channel
R-2-ADMIN	223.640 MHz	127.3 Hz	220 admin channel
R-U-TAC-2	445.9000 MHz	114.8 Hz	UHF tactical channel
R-U-ADMIN	440.9500 MHz	114.8 Hz	UHF admin channel



STATEWIDE ARES/RACES VOICE CHANNELS

LOCAL AND REGIONAL ARES/RACES VOICE CHANNELS				
CHANNEL NAME	FREQUENCY	OFFSET	PL TONE	COMMENTS
ILDA	145.6100 MHz	Simplex	\$123	Digital
IL2A	146.5200 MHz	Simplex	CSQ	
ILUHFA	446.0000 MHz	Simplex	CSQ	
IL80M	3.9050	SSB	N/A	Primary 80 Meter

AUXILIARY COMMUNICATIONS POCs

Personnel marked as WV Recognized have completed the WV specific AUXCOM course and are recognized as WV AUXCOMM personnel.

Personnel marked as Federal Recognized have passed the Federal AUXCOMM course and are recognized as AUXCOMM personnel throughout the United States.

AUXILIARY COMMUNICATIONS POINTS OF CONTACT				
NAME CALL SIGN	PHONE EMAIL	COUNTY AFFILIATION	FED	WV
Region I				
Gary Bosworth, Jr. W8GBB	740-516-9655 gbbosworth@yahoo.com	Wood County Marietta College PD Wood Co EC	<input type="checkbox"/>	<input checked="" type="checkbox"/>
Phillip "Denny" Bryant, Sr W8DGG	204-561-4661 W8dgg1984@gmail.com	Kanawha County CPSW WVDHHR/Kanawha ARES	<input type="checkbox"/>	<input checked="" type="checkbox"/>
Lonnie Bryson	304-552-5211 gunslinger063@gmail.com	Kanawha County Emergency Mgt	<input checked="" type="checkbox"/>	<input type="checkbox"/>



AUXILIARY COMMUNICATIONS POINTS OF CONTACT				
NAME CALL SIGN	PHONE EMAIL	COUNTY AFFILIATION	FED	WV
Robert Campbell WA2GO	304-542-5312 robertcampbelldds@gmail.com	Kanawha County ARES	<input type="checkbox"/>	<input checked="" type="checkbox"/>
Larry Cook KC8ZRE	304-372-5312 lcrg@citynet.net	Jackson County Amateur Radio	<input type="checkbox"/>	<input checked="" type="checkbox"/>
James "Rick" Cummings WV8RC	304-610-6404 Rickwv8rc@gmail.com	Kanawha County ARES	<input checked="" type="checkbox"/>	<input checked="" type="checkbox"/>
William Davidson N8JXO304-684- 0940	304-482-2184 N8jxO@suddenlink.net	Wood County MOVHD & Wood Co Comm	<input type="checkbox"/>	<input checked="" type="checkbox"/>
David Erwin	304-382-1847 daveerwin@kanawha.us	Kanawha County Emergency Mgt	<input checked="" type="checkbox"/>	<input type="checkbox"/>
Paul Foster N8ZVC	304-834-6738 pfoster@sjaswv.com	Wood County Sg Joseph's Ambulance	<input type="checkbox"/>	<input checked="" type="checkbox"/>
Alton Glatfelter KE8AZV	304-684-0940 Aglat2766@frontier.com	Pleasants County Tyler County Search and Rescue	<input type="checkbox"/>	<input checked="" type="checkbox"/>
Dortha Harris KC8HAI	304-679-3470 Kc8hai@yahoo.com	Wood County Emergency Comm	<input type="checkbox"/>	<input checked="" type="checkbox"/>
Kenneth Harris WA8LLM	304-481-3840 Wa8llm@yahoo.com	Wood County Emergency Comm	<input type="checkbox"/>	<input checked="" type="checkbox"/>
Jimmie Lee Mangus, Jr. WB8YST	304-542-6230 jmangus@metro911.org	Kanawha County 911	<input checked="" type="checkbox"/>	<input checked="" type="checkbox"/>
Jimmie Mangus, III KC8NDZ	304-542-1521 Kc8ndz@msn.com	Kanawha County ARES	<input type="checkbox"/>	<input type="checkbox"/>
Michael Maxson W8SI	304-389-1100 maxson@suddenlink.net	Putnam County WV SEC - ARES	<input checked="" type="checkbox"/>	<input checked="" type="checkbox"/>
Terry Mills KC8TUE	304-494-1267 Renegade856@yahoo.com	Wood County Emergency Comm	<input type="checkbox"/>	<input checked="" type="checkbox"/>



AUXILIARY COMMUNICATIONS POINTS OF CONTACT

NAME CALL SIGN	PHONE EMAIL	COUNTY AFFILIATION	FED	WV
Charles Osborne KC8HXA	304-273-0133 ceoturkey@frontier.com	Jackson County Amateur Radio	<input type="checkbox"/>	<input checked="" type="checkbox"/>
David Poe W8IW	304-542-3839 W8iw42@gmail.com	Kanawha County ARES	<input checked="" type="checkbox"/>	<input checked="" type="checkbox"/>
Joe Richards WV8WVU	304-807-1947 wv8fvu@gmail.com	Kanawha County ARES	<input checked="" type="checkbox"/>	<input checked="" type="checkbox"/>
Gene Rinehart N8XAQ	304-545-8099 greg.n.rinehart@wv.gov	Kanawha County Charleston Health Department	<input type="checkbox"/>	<input checked="" type="checkbox"/>
James Rose KD8ITI	304-481-0236 kimberly7@frontier.com	Wood County Emergency Comm	<input type="checkbox"/>	<input checked="" type="checkbox"/>
Dana Rowsey	304-389-8980 dana.rowsey@charlestonwvpolice.org	Kanawha County Charleston PD	<input checked="" type="checkbox"/>	<input type="checkbox"/>
Terry Sanner WV8V	304-925-1662 terry.sanner@fontier.com	Kanawha County ARES	<input checked="" type="checkbox"/>	<input checked="" type="checkbox"/>
Richard Sawyer WV8DOC	304-494-9957 rick.sawyer@gmail.com	Wood County Emergency Comm	<input type="checkbox"/>	<input checked="" type="checkbox"/>
Jim Stevens	304-522-6454 jim.nx8z@gmail.com	Putnam County Emergency Mgt	<input checked="" type="checkbox"/>	<input type="checkbox"/>
Fred Vickers WV8FV	304-421-1707 fredvickers@gmail.com	Kanawha County ARES	<input checked="" type="checkbox"/>	<input checked="" type="checkbox"/>
Kimberly Warden- Rose KD8ITH	304-481-4790 kimberly.warden.rose@wvumedicine.org	Wood County Camden Clark Hospital	<input type="checkbox"/>	<input checked="" type="checkbox"/>
Robert West	304-380-4168 w8xrw@outlook.com	Kanawha County Emergency Mgt	<input checked="" type="checkbox"/>	<input type="checkbox"/>
Donald Williams N8NUS	304-481-8991 n8nus@hotmail.com	Tyler County Tyler County EMA	<input type="checkbox"/>	<input type="checkbox"/>
Bradley Young N8EUP	304-543-9123 bradley.young@suddenlink.net	Kanawha County ARES	<input checked="" type="checkbox"/>	<input checked="" type="checkbox"/>



AUXILIARY COMMUNICATIONS POINTS OF CONTACT				
NAME CALL SIGN	PHONE EMAIL	COUNTY AFFILIATION	FED	WV
Region II				
Matt Koval KA8YEZ	304-242-4764 ka8yez@yahoo.com	Ohio County R.A.C.E.S. Officer	<input type="checkbox"/>	<input checked="" type="checkbox"/>
Edward Messenger N8OYY	304-517-9715 n8oyy@hotmail.com	Taylor County WV Region 2 ARES	<input type="checkbox"/>	<input checked="" type="checkbox"/>
David Prince KE8NFF	304-293-3136 drprince@mail.wvu.edu	Monongalia WVU Police Dept	<input type="checkbox"/>	<input checked="" type="checkbox"/>
Brian Reid KE8ICS	304-639-573 bkreidster@gmail.com	Ohio County RACES	<input type="checkbox"/>	<input checked="" type="checkbox"/>
James Seckel KC8YUI	304-319-1828 jaseckel@comcast.net	Monongalia County EC (ARRL)	<input type="checkbox"/>	<input checked="" type="checkbox"/>
Robert Wilkerson KD8GXI	304-312-3570 Rwilkerson326@gmail.com	Ohio County WV ARES	<input type="checkbox"/>	<input checked="" type="checkbox"/>
Region III				
Jacob Bixler	540-664-4376 jacob.d.bixler.mil@mail.mil	Berkley County WV National Guard	<input checked="" type="checkbox"/>	<input type="checkbox"/>
John Gorby	304-405-6140 mgregg@masoncountyoies.com	Marshall County Emergency Mgt	<input checked="" type="checkbox"/>	<input type="checkbox"/>
Michael Hart	540-622-7946 michael.a.hart@gmail.com	Berkley County WV National Guard	<input checked="" type="checkbox"/>	<input type="checkbox"/>
Region IV				
Bert Brooks WB3GSO	304-853-9196 sunbear@frontier.com	Braxton County PARA/CW VWA	<input type="checkbox"/>	<input checked="" type="checkbox"/>
Dirk Burnside WD8PAD	304-495-2969 dirk.o.burnside@wv.gov	Upshur County WV Div of Highways	<input checked="" type="checkbox"/>	<input checked="" type="checkbox"/>
Edward Caplinger LE8MIB	304-668-3157 kd8mib@yahoo.com	Pendleton County EC ARES; OES	<input type="checkbox"/>	<input checked="" type="checkbox"/>
Bruce Minor	304-668-1100 tact12000@yahoo.com	Pendleton County HSEM	<input type="checkbox"/>	<input checked="" type="checkbox"/>
Ronald Skidmore KE8ERK	304-457-0019 rskidmore@barbourcountywv.org	Barbour County OEM	<input type="checkbox"/>	<input checked="" type="checkbox"/>



AUXILIARY COMMUNICATIONS POINTS OF CONTACT				
NAME CALL SIGN	PHONE EMAIL	COUNTY AFFILIATION	FED	WV
Region V				
John Anthony KD8TAE	304-578-1160 kd8tae@icloud.com	Raleigh County ARES; WV CAP	<input type="checkbox"/>	<input checked="" type="checkbox"/>
Robert Cook KA8MDZ	304-888-2411 rcook@juno.com	Mercer County East River Amateur Radio Club	<input type="checkbox"/>	<input checked="" type="checkbox"/>
Teresa VanDyke KD8LKB	304-436-5700 teresa.a.vandyke@wv.net	McDowell County 911	<input type="checkbox"/>	<input checked="" type="checkbox"/>
Region VI				
Mark Bradshaw N8AOK	681-203-0645 Mark.l.bradshaw@wv.gov	Lawrence County Cabell-Huntington Health Dept	<input type="checkbox"/>	<input checked="" type="checkbox"/>
Scott Donley KE8JGP	304-460-5748 sdonley@masoncountytoes.com	Mason County Amateur Radio Club	<input type="checkbox"/>	<input checked="" type="checkbox"/>
Matthew Gregg WV8MAT	304-919-3068 mgregg@masoncountyo.es.com	Mason County OES	<input checked="" type="checkbox"/>	<input checked="" type="checkbox"/>
Steve Vititoe	304-633-6388 Fred Steve.vititoe@ccems.org	Cabell County EMS	<input checked="" type="checkbox"/>	<input type="checkbox"/>



AMATEUR RADIO ORGANIZATIONS

AMATEUR RADIO ORGANIZATIONS		
ORGANIZATION	NAME CALL SIGN	PHONE EMAIL
Region I		
Putnam ARES	Mark Maxson W8SI	304-389-1100
Region II		
None identified in Region		
Region III		
EC – ARES/ RACES Emergency Coordinator	Butch Sayer WV8BS	304-813-9625 wv8bs@comcast.net
AEC – Assistant ARES/RACES Emergency Coordinator	Rick Green KC8BTU	304-788-1352 rwgreen46@comcast.net
AEC – Assistant ARES/RACES Emergency Coordinator	Kenneth Caplinger WV8KDC	304-290-1778 wv8kdc@comcast.net
AEC – Assistant ARES/RACES Emergency Coordinator	Shawn Wolfe W8SJW	304-790-0074 304-209-6141 w8sjwradio@gmail.com
Region IV		
Amateur (HAM) Radio Operators		



AMATEUR RADIO ORGANIZATIONS		
ORGANIZATION	NAME CALL SIGN	PHONE EMAIL
Region V		
Black Diamond HAM Two Way Radio	Doug Lowe	681-368-0381
Region VI		
Big Sandy Amateur Radio Club of Louisa	Tom Lykins K4LID	k4lid@panix.com
Logan County Amateur Radio Club	Naomi I. Maynard KD8CVJ	maynardsidney@hotmail.com
Coal Country Amateur Radio Club	John B. Holstein WV8JBH	johnholstein@gmail.com
Tri-State Amateur Radio Association	Fred Herr WD8AGH	wd8agh@gmail.com



Communications Unit Personnel

The following table lists contact information for the Regional Emergency Resource Personnel and Communications Unit capability.

COMMUNICATIONS UNIT PERSONNEL			
NAME	AGENCY	24/7 PHONE EMAIL	COMU ROLE
Region I			
Faulk, RC	WV DHSEM	304-380-1047 rcfaulk@wv.gov	COML
Kirby, Danny MSG	WV National Guard	304-561-4315 Daniel.j.kirby.mil@mail.mil	COML
Mangus, Jimmie Lee	Kanawha Metro 911	304-746-7911 jmangus@metro911.org	COML
McCabe, GE	WV DHSEM	304-389-7507	COML
McCallister, Roy	WV Dept. of Agriculture	304-558-5892 rmccallister@wvda.us	COML
Wood, Bill	WV DHSEM	304-957-2570 Bill.j.wood@wv.gov	COML
Region II			
McConnell, Dustyn Kreig	Harrison Co EMS	304-677-3403 dmccconnell@harrisoncoems.com	COML
Way, Jeffrey	Harrison Co EMS	304-672-3011 jway@harrisoncoems.com	COML
Wolfe, Justin R.	Preston Co 911	304-698-1598	COML
Region III			
None identified in Region			
Region IV			
None identified in Region			



COMMUNICATIONS UNIT PERSONNEL			
Name	Agency	24/7 PHONE EMAIL	COMU Role
Region V			
Evans, Rodney	WV State Police	304-552-3711 Rodney.l.evans@wvsp.gov	COML
White, Keven S.	Fayette Co 911	304-574-4653 kwhite@fayettecounty911wv.org	COML
Region VI			
Gregg, Matt	Mason Co OES	304-919-3068 mgregg@masoncountyo.es.com	COML



Change Number	Change Date	Page Number	Change	Description

